

# Index Acoustic Cabinet, 2607

Assembly Instruction for Index Basic-D and Everest-D



## Table of contents

---

### PART 1

p3: Parts list

p4: Mounting the base cabinet

p10: Installation of the hinges and gas damper

### PART 2

p18: Set-up for Everest-D, A4 paper

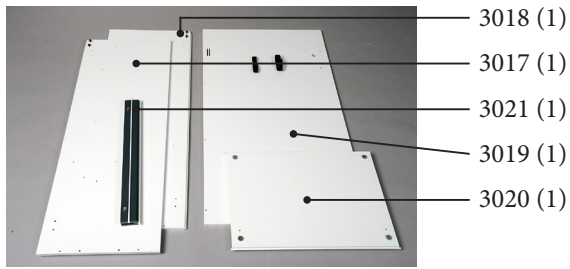
p19: Set-up for Everest-D, A3 paper

p20: Set-up for Basic-D

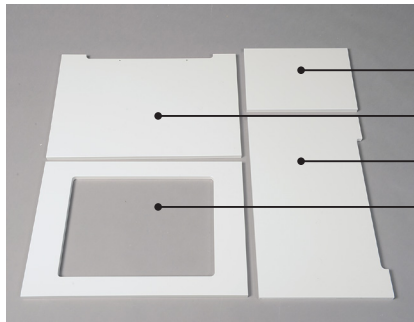
p24: Power supply attachment

p26: Mounting the wheels

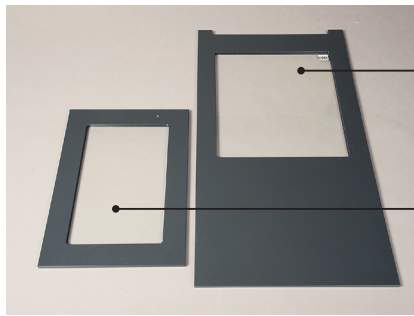




- 3018 (1)
- 3017 (1)
- 3021 (1)
- 3019 (1)
- 3020 (1)



- 3027 (1)
- 3025 (1)
- 3026 (1)
- 3024 (1)



- 3022 (1)
- 3023 (1)



- 3029 (4)
- 3030 (4)
- 3043 (1)
- 3044 (1)
- 2555 (1)
- 2554 (1)



- 3039 (1)
- 3045 (2)
- 3041 (4)
- 3042 (4)
- 3040 (1)
- 3035 (16)
- 3034 (19)
- 3032 (2)
- 3031 (2)
- 3033 (2)
- 3038 (4)
- 3037 3mm (1)
- 3036 2,5mm (1)
- 3028 (1)

## Mounting the base cabinet

---





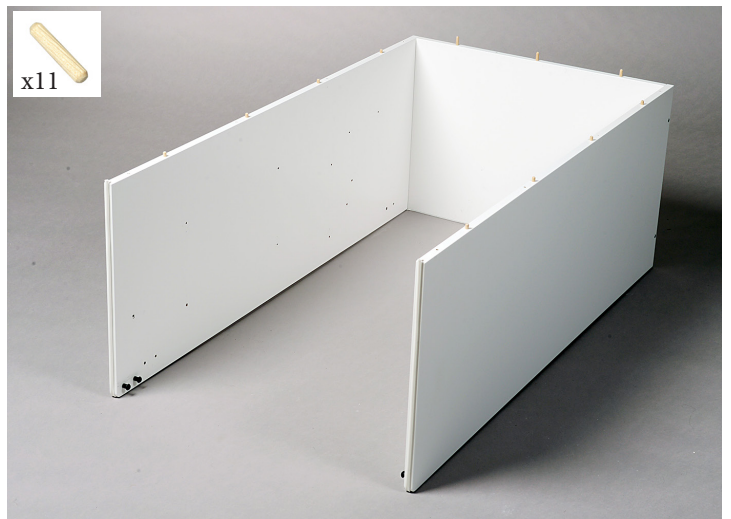
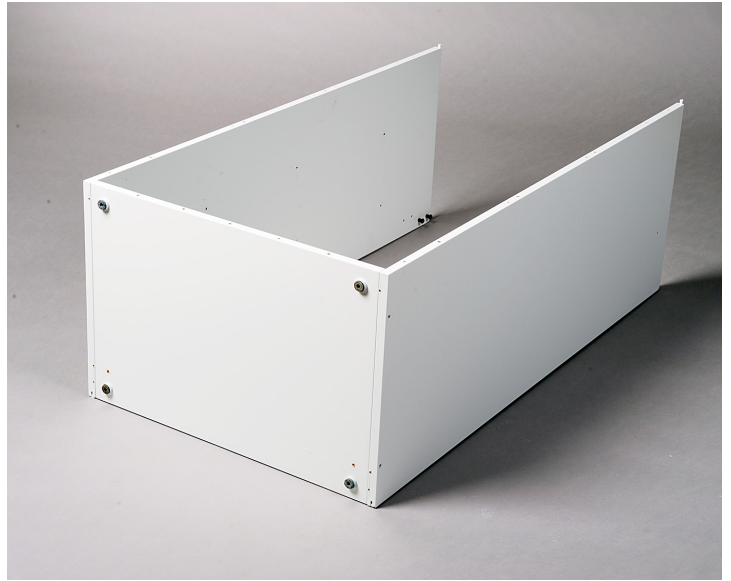


## Mounting the base cabinet

---



## Mounting the base cabinet



## Mounting the base cabinet

---





## Mounting the base cabinet



# Installation of the hinges and gas damper



3029 (4)



3030 (4)



3032 (2)



3031 (2)



3033 (2)



3028 (1)

## Installation of the hinges and gas damper

---





## Installation of the hinges and gas damper

---





## Installation of the hinges and gas damper

---

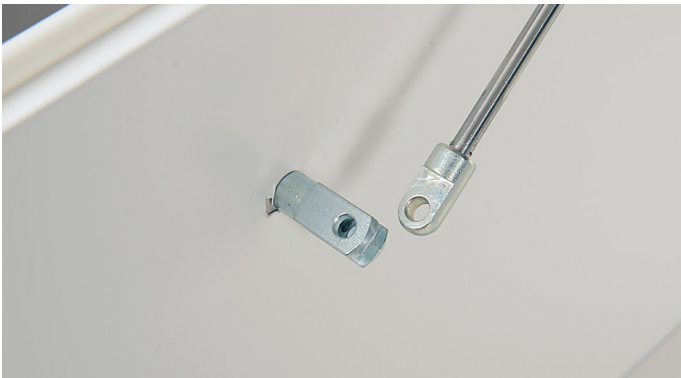


## Installation of the hinges and gas damper





# Installation of the hinges and gas damper



## Installation of the hinges and gas damper





## Part 2: Configuration for Basic-D and Everest-D

## Everest-D set-up for A4 paper

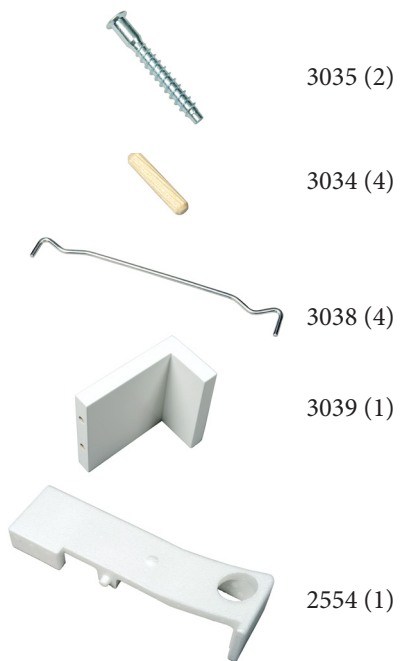
---







# Basic-D set-up for fan-fold paper

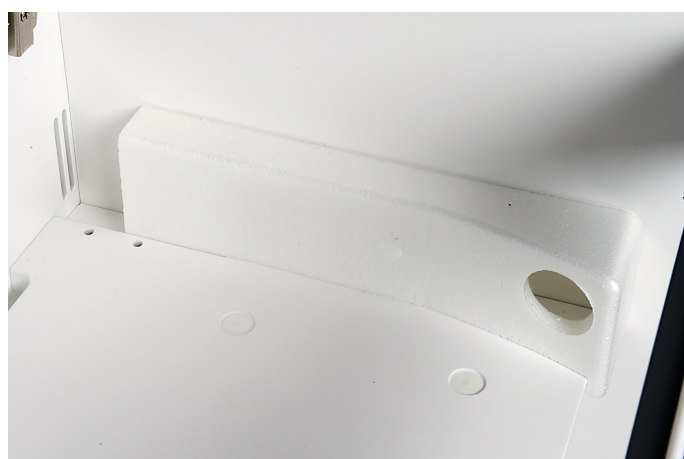




# Basic-D set-up for fan-fold paper

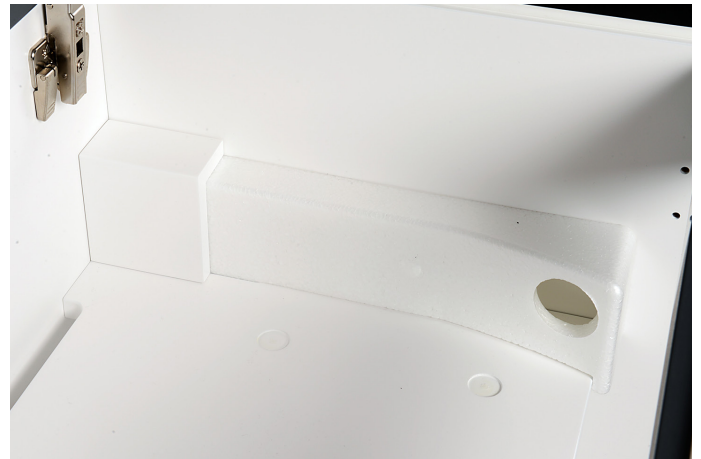


## Basic-D set-up for fan-fold paper





## Basic-D set-up for fan-fold paper





## Power supply attachment

---



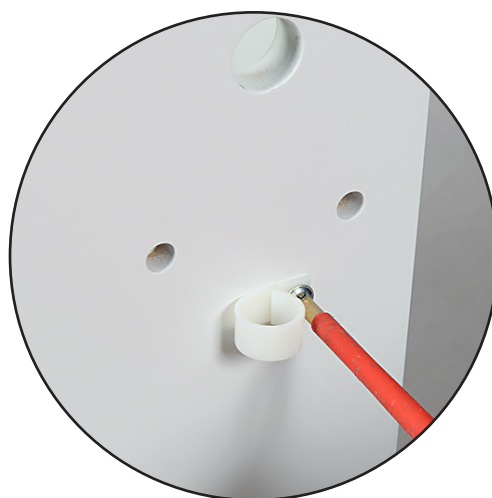
3043 (1)



3044 (1)



2555 (1)





## Mounting the wheels

---



















[www.indexbraille.com](http://www.indexbraille.com)