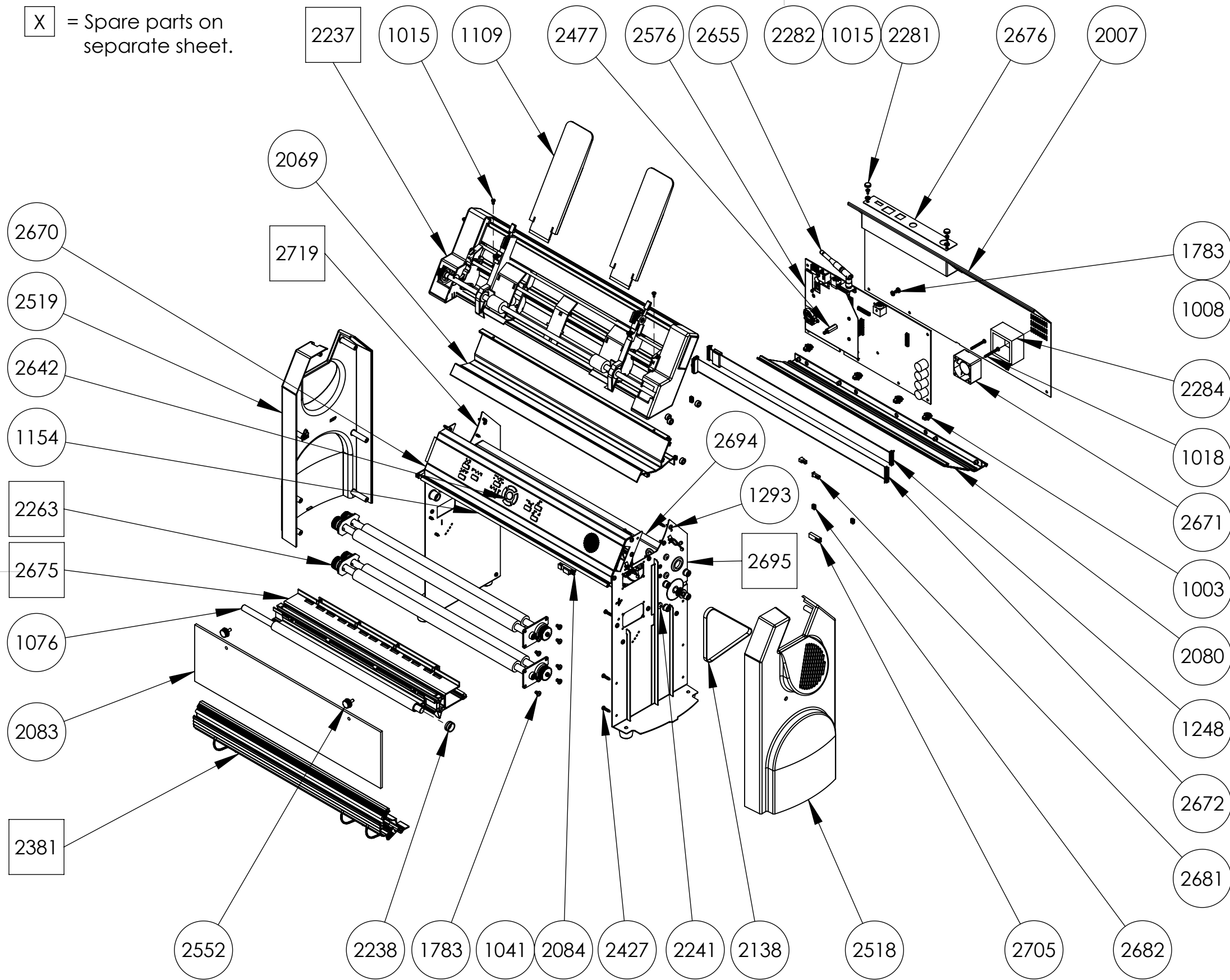


X = Spare parts on separate sheet.



2670	Profile Control Panel	1
2655	WiFi Antenna	1
2642	Control Panel Everest V5	1
2584	Braille Box Lamp PCB V5	1
2576	Module 1365-A Main Board PCB V5	1
2552	Knureld Screw M4x10	2
2519	Casing Left	1
2518	Casing Right Speaker	1
2477	Screw DSS M4070x20	1
2427	Screw PT-WN 1442 3,5x14 fzb	15
2381	Profile Front Bottom Module	1
2284	Ventilation shaft for fan	1
2282	Plastic Washer	2
2281	Plastic Cap	2
2263	Shaft Module	2
2242	Screw MRX M4x22 fzb	4
2241	Screw MRX M5x6 fzb	6
2238	Locking Ring	1
2237	Sheet Feeder	1
2138	Timing Belt	1
2084	Paper Sensor	1
2083	Glass	1
2080	Profile Lower Back	1
2069	Profile Upper Back	1
2007	Plate back	1
1783	Screw MRX M4x6 fzb	9
1293	Screw RXS 3,5x9,5-fzb	20
1248	Cable Embosser Head	1
1154	Rubber List 435mm	1
1109	Paper Support	2
1076	Axle 10x417	1
1041	Screw RXK ST2,9x6,5-fzb	1
1018	Screw MRX M3x30 fzb	2
1015	Screw MRX M3x6 fzb black	4
1008	Lock Washer AZ4,3 fzb	1
1003	Holder Mainboard	4
Part Number	Part Name	QTY

2719	Plate Side Left Module V5	1
2705	Cable Sheet Feeder	1
2695	Plate Side Right Motor Module	1
2694	Plate Center Module V5	1
2682	Sensor Cable	1
Part Number	Part Name	QTY

2681	Fan/LED Cable	1
2676	Interface Plate	1
2675	Embosser Head Everest V5	1
2672	Connection Cable 1365A/Panel	1
2671	Fan 40x40x24	1
Part Number	Part Name	QTY



Owner:

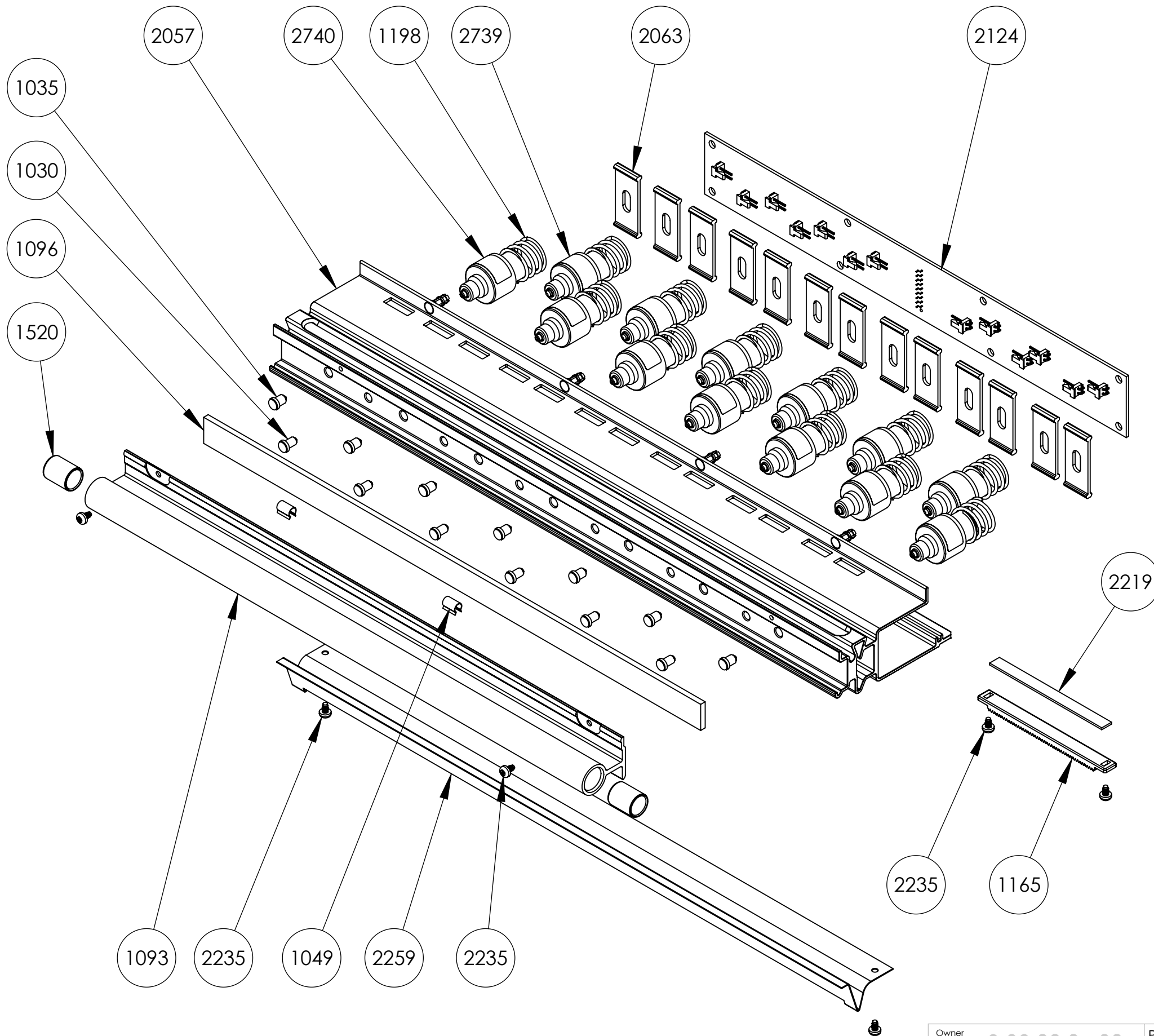
Part Name: **Everest-D V5**

Part Number: **2601**

Drawn by: **Mattias** Approved by: **Janne** Format: **A3** Scale: **1:1**

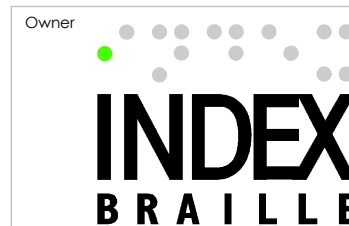
Date: **2017-04-27** Revision: **-** Sheet: **1/1**

This document must not be copied without our written permission, and the contents thereof must not be imparted to a third party nor be used for any unauthorized purpose. Contravention will be prosecuted.



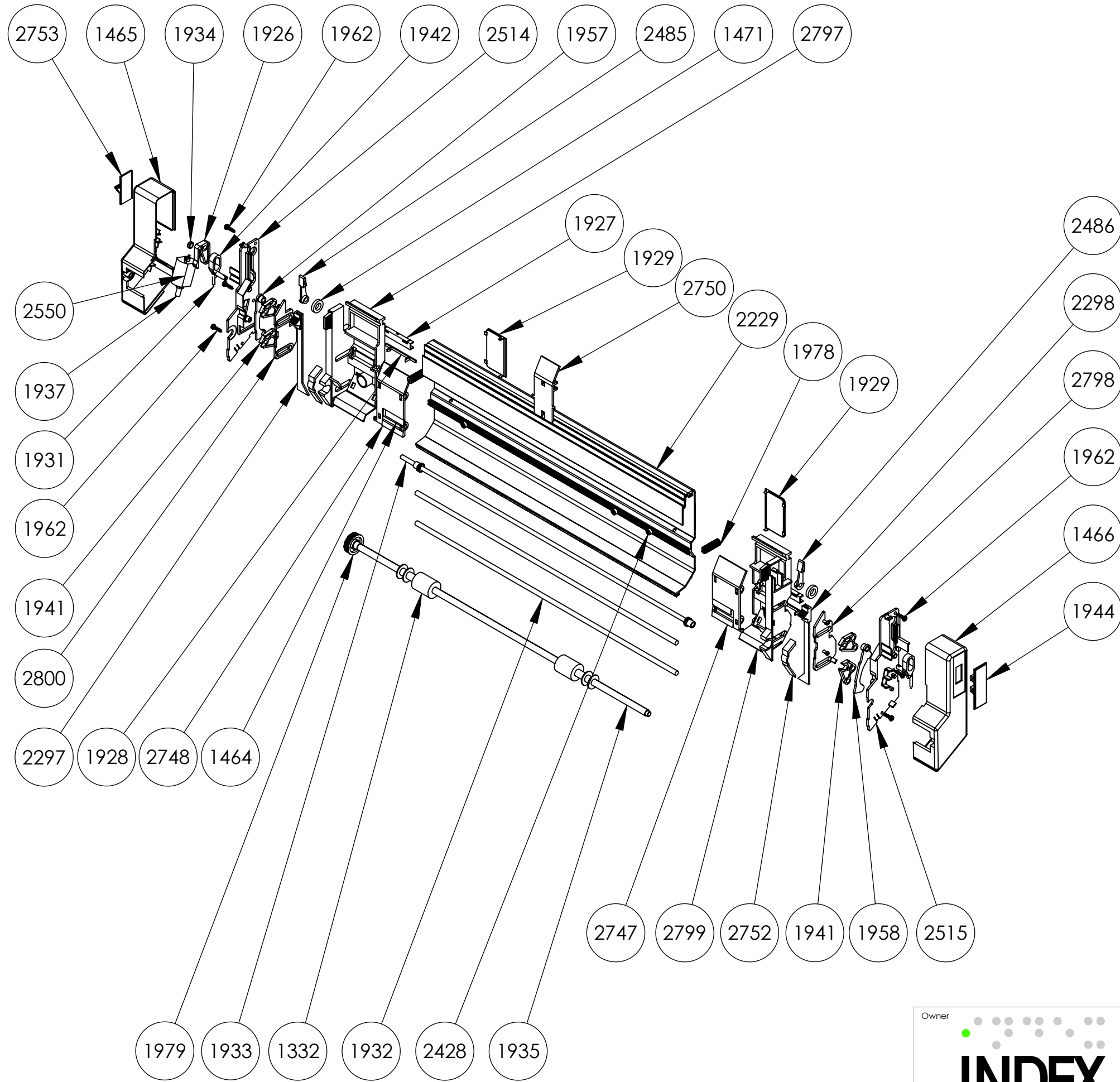
2740	Hammer Negative	7
2739	Hammer Positiv	6
2259	Paper Guide EmbosserHead	1
2235	Screw RXK ST2,9x4,5 fzb	6
2219	Embosser Head Plastic	1
2124	Bord Embossing Head PCB V4	1
2063	Profile Hammer Lid	13
2057	Profile Hammer Everest	1
1520	Slide Bearing	2
1198	Spring for hammer	13
1165	Gear bar, embosser head	1
1096	Rubber damper	1
1093	Profile Bearing	1
1049	Holder clips Embosser Head	2
1035	Anvil Positive	7
1030	Anvil Negative	6
Part Number	Part Name	QTY

This document must not be copied without our written permission, and the contents thereof must not be imparted to a third party nor be used for any unauthorized purpose. Contravention will be prosecuted.

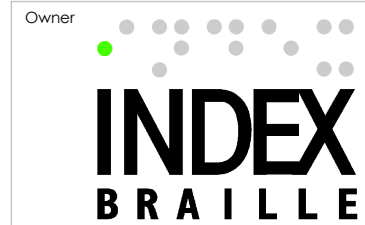


Owner	Part Name								
	<b>Embosser Head Everest V5</b>								
Part Number	2675	Drawn by	Mattias	Approved by	Janne	Format	A3	Scale	1:1
Date	2017-04-05	Revision	-	Sheet	1/1				

This document must not be copied without our written permission, and the contents thereof must not be imparted to a third party nor be used for any unauthorized purpose. Contravention will be prosecuted.



2800	Sheet Feeder Cover Plate Left	1
2799	Sheet Feeder Paper Chute Right	1
2798	Sheet Feeder Cover Plate Right	1
2797	Sheet Feeder Paper Chute Left	1
2753	Sheet Feeder Guide	1
2752	Axle Support Sheet Feeder	2
1944	Sheetfeeder Cover Side	1
2750	Sheet Feeder Support	1
1929	Sheet Feeder Cover Rear	2
2748	Sheet Feeder Setting Plate R	1
2747	Sheet Feeder Setting Plate L	1
2550	DC-Motor Sheet Feeder	1
2515	Sheet Feeder Side Right	1
2514	Sheet Feeder Side Left	1
1466	Sheetfeeder Cover Right	1
1465	Sheetfeeder Cover Left	1
2486	Sheet Feeder Lock Arm	1
2485	Sheet Feeder Lock Arm	1
2428	Screw MC6S 8.8 M4x6H fzb	3
2298	Sheet Feeder Sheet Card Right	1
2297	Sheet Feeder Sheet Card Left	1
2229	Profile SheetFeeder	1
1979	Gear Worm + Roller Clutch	1
1978	Sheet Feeder Spring Pressure	2
1962	Screw Torx DG30x13	6
1958	Sheet Feeder Twin Tool Right	1
1957	Sheet Feeder Twin Tool Left	1
1942	Sheet Feeder Rod Tie	2
1941	Swivel Lever	4
1937	Sheet Feeder Gear Worm	1
1935	Sheet Feeder Shaft	1
1934	Sheet Feeder Bushing Distance	1
1933	Sheet Feeder Shaft + GearWheel	1
1932	Sheet Feeder Shaft	2
1931	Sheet Feeder Spring Tension	2
1928	Sheet Feeder Sliding Part	2
1927	Sheet Feeder Guide	2
1926	Sheet Feeder Catch 1	1
1471	Sheet Feeder Rubber Locker Ring	2
1464	Sheet Feeder Cork	2
1332	Pickup Rollers Sheet	2
Part Number	Part Name	QTY



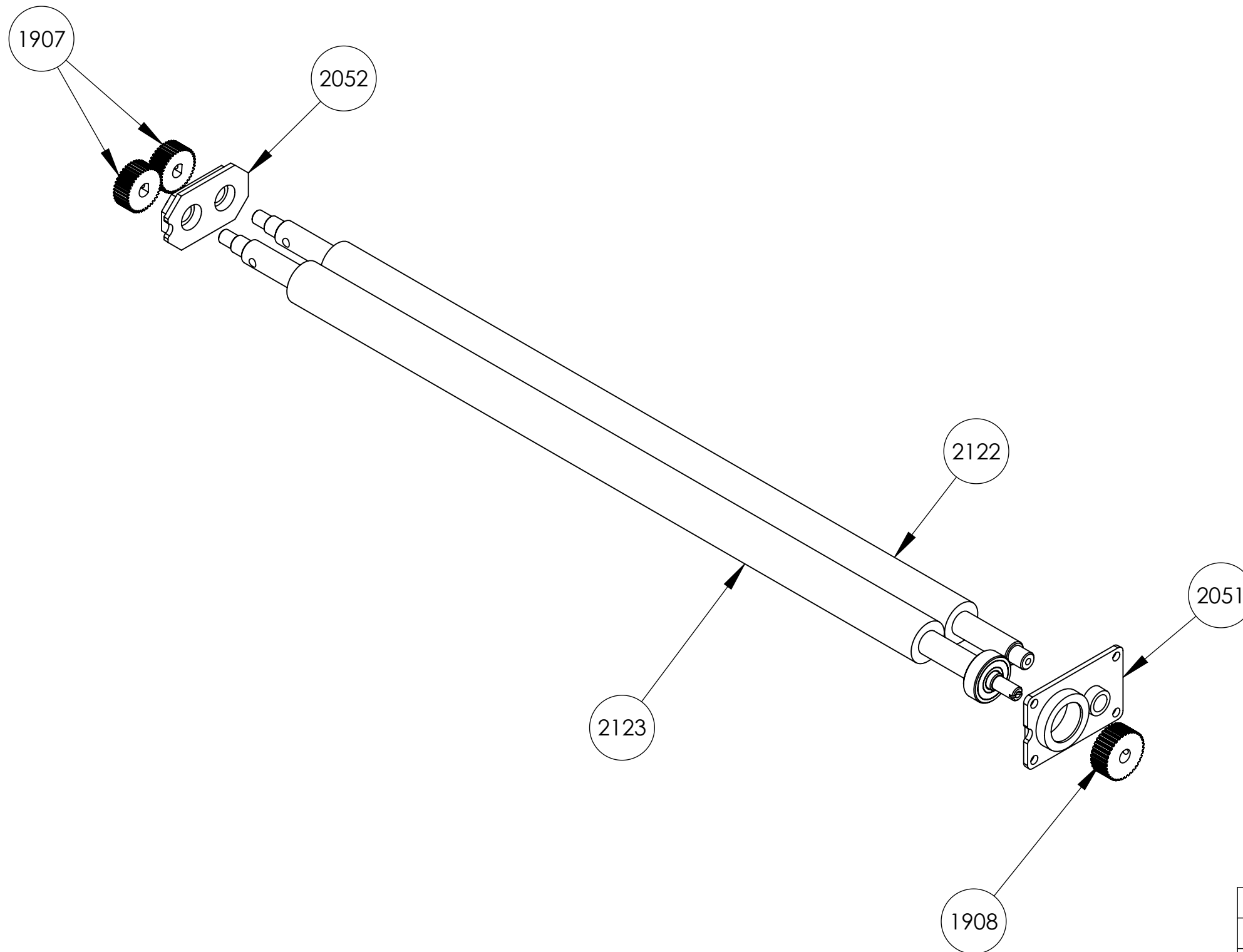
Owner:

**Part Name**  
**Sheet Feeder**

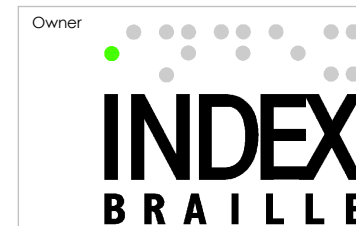
**Part Number**  
**2237**

Drawn by <b>Mattias</b>	Approved by <b>Janne</b>	Format <b>A3</b>	Scale <b>1:10</b>
Date <b>2017-04-27</b>		Revision <b>-</b>	Sheet <b>1/1</b>

This document must not be copied without our written permission, and the contents thereof must not be imparted to a third party nor be used for any unauthorized purpose. Contravention will be prosecuted.



2123	Shaft with rubber	1
2122	Shaft with rubber	1
2052	Housing bearing Right	1
2051	Housing Bearing Right	1
1908	Pulley 36 step	1
1907	Gear wheel 40 step	2
Part Number	Part Name	QTY



Part Name  
**Shaft Module**

Part Number  
**2263**

Drawn by  
**Mattias**  
 Date  
**2012-08-17**

Approved by  
**Janne**



Format  
**A3**

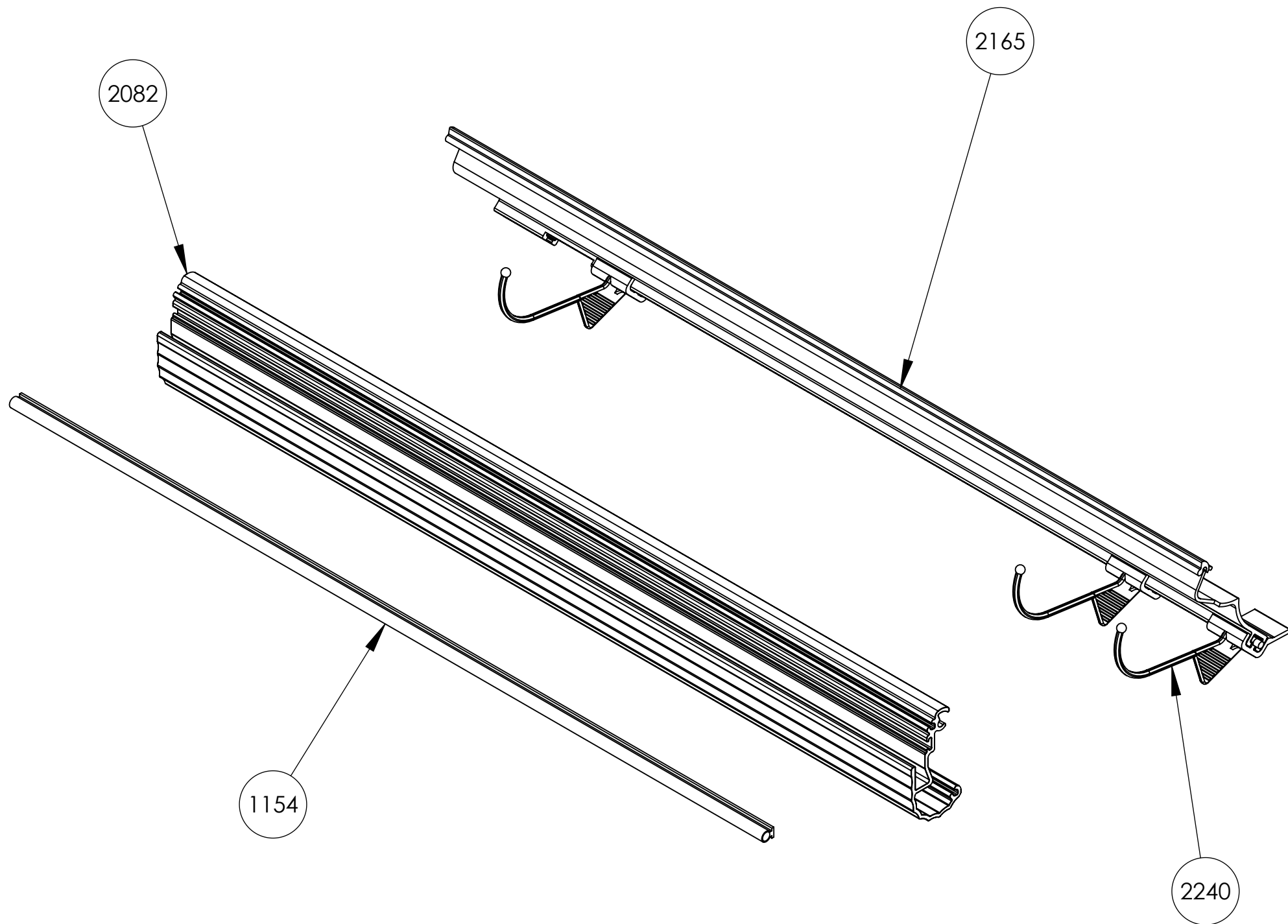
Scale  
**1:2**

Revision  
**-**

Sheet  
**1/1**



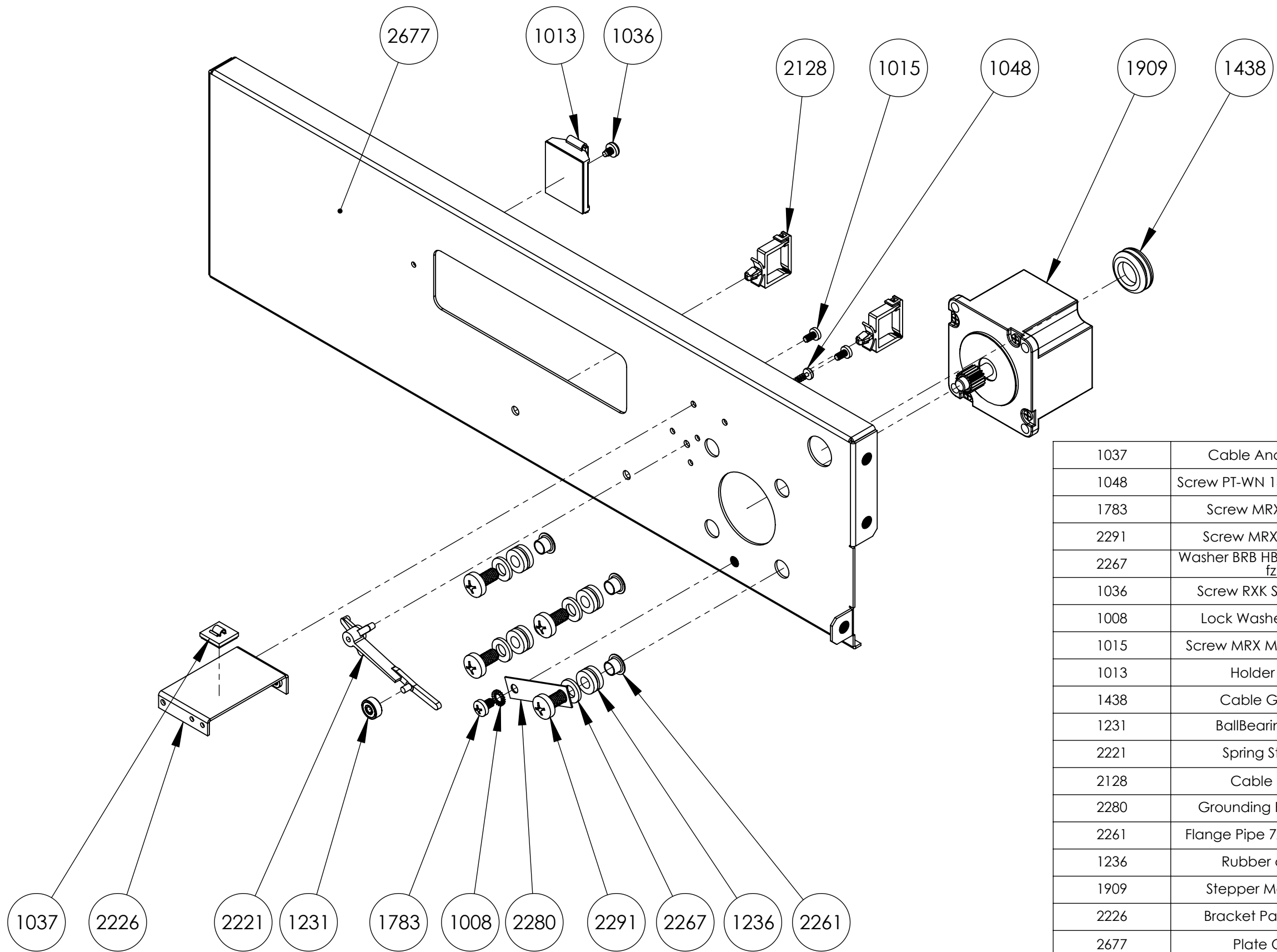
This document must not be copied without our written permission, and the contents thereof must not be imparted to a third party nor be used for any unauthorized purpose. Contravention will be prosecuted.



2240	Document guide	3
2165	Profile Front Bottom	1
2082	Profile Front Bottom	1
1154	Rubber List 435mm	1
Part Number	Part Name	QTY



Owner		Part Name	
<b>INDEX BRAILLE</b>		<b>Profile Front Bottom Module</b>	
Part Number	2381	Drawn by	Approved by
		Mattias	Janne
Date	2015-04-08	Format	Scale
		A3	1:2
		Revision	Sheet
		A	1/1



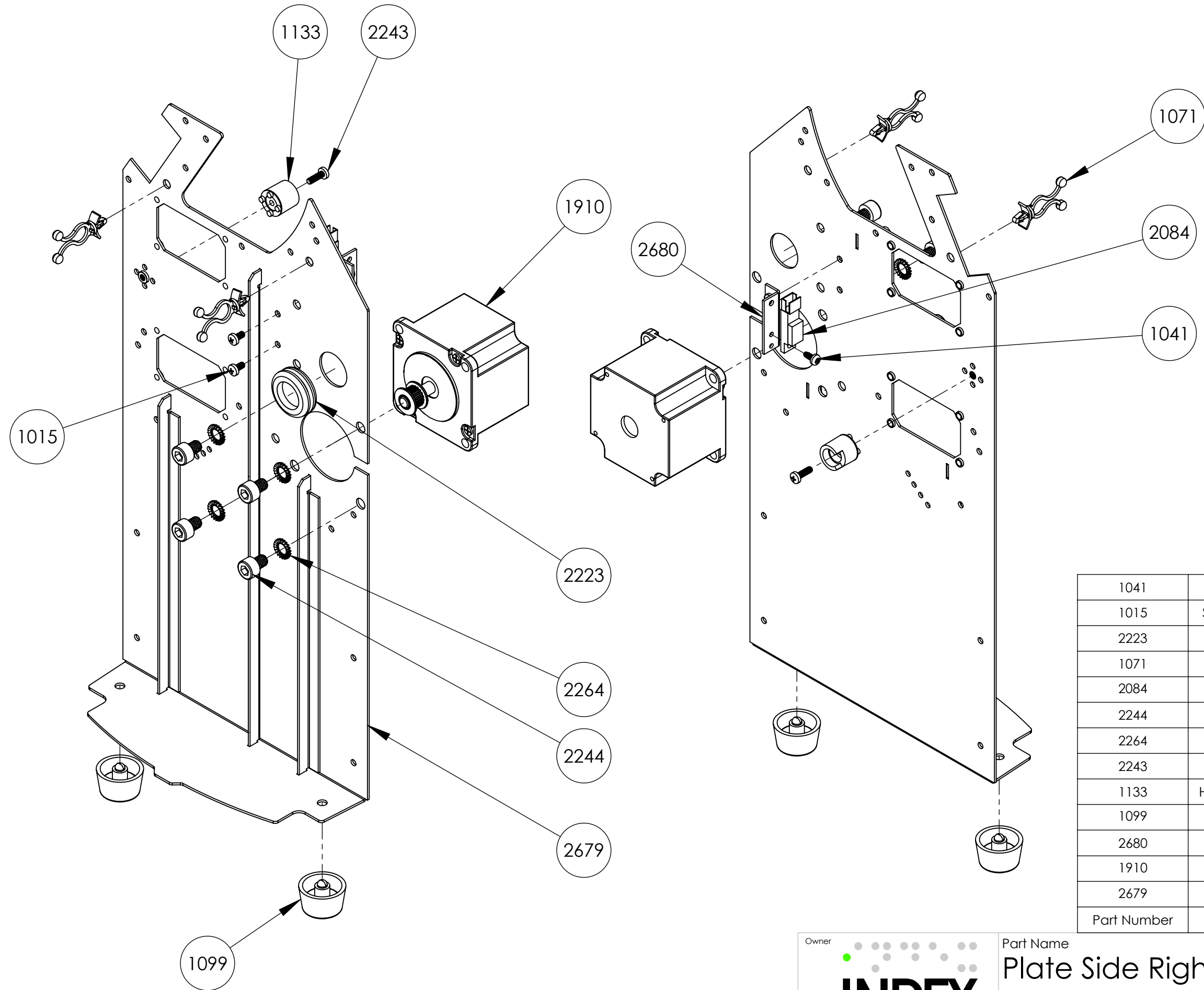
1037	Cable Anchor Small	1
1048	Screw PT-WN 1442 ST3,0x8 fzb	1
1783	Screw MRX M4x6 fzb	1
2291	Screw MRX M6x12 fzb	4
2267	Washer BRB HB200 6,4x12x1,6 fzb	4
1036	Screw RXK ST3,5x4,5-fzb	1
1008	Lock Washer AZ4,3 fzb	1
1015	Screw MRX M3x6 fzb black	2
1013	Holder Cable	1
1438	Cable Grommet	1
1231	BallBearing 623-ZZ	1
2221	Spring Stretcher	1
2128	Cable Holder	2
2280	Grounding Plate Motor	1
2261	Flange Pipe 7x0,45x5 P H10	4
1236	Rubber damper	4
1909	Stepper Motor Head	1
2226	Bracket Paper Sensor	1
2677	Plate Center	1
Part Number	Part Name	QTY

This document must not be copied without our written permission, and the contents thereof must not be imparted to a third party nor be used for any unauthorized purpose. Contravention will be prosecuted.



Owner	Part Name			
	<b>Plate Center Module V5</b>			
	Part Number	Drawn by	Approved by	Format
	<b>2694</b>	Mattias	Janne	A3
		Date	Revision	Scale
		2016-12-07	-	1:1
			Sheet	
			1/1	

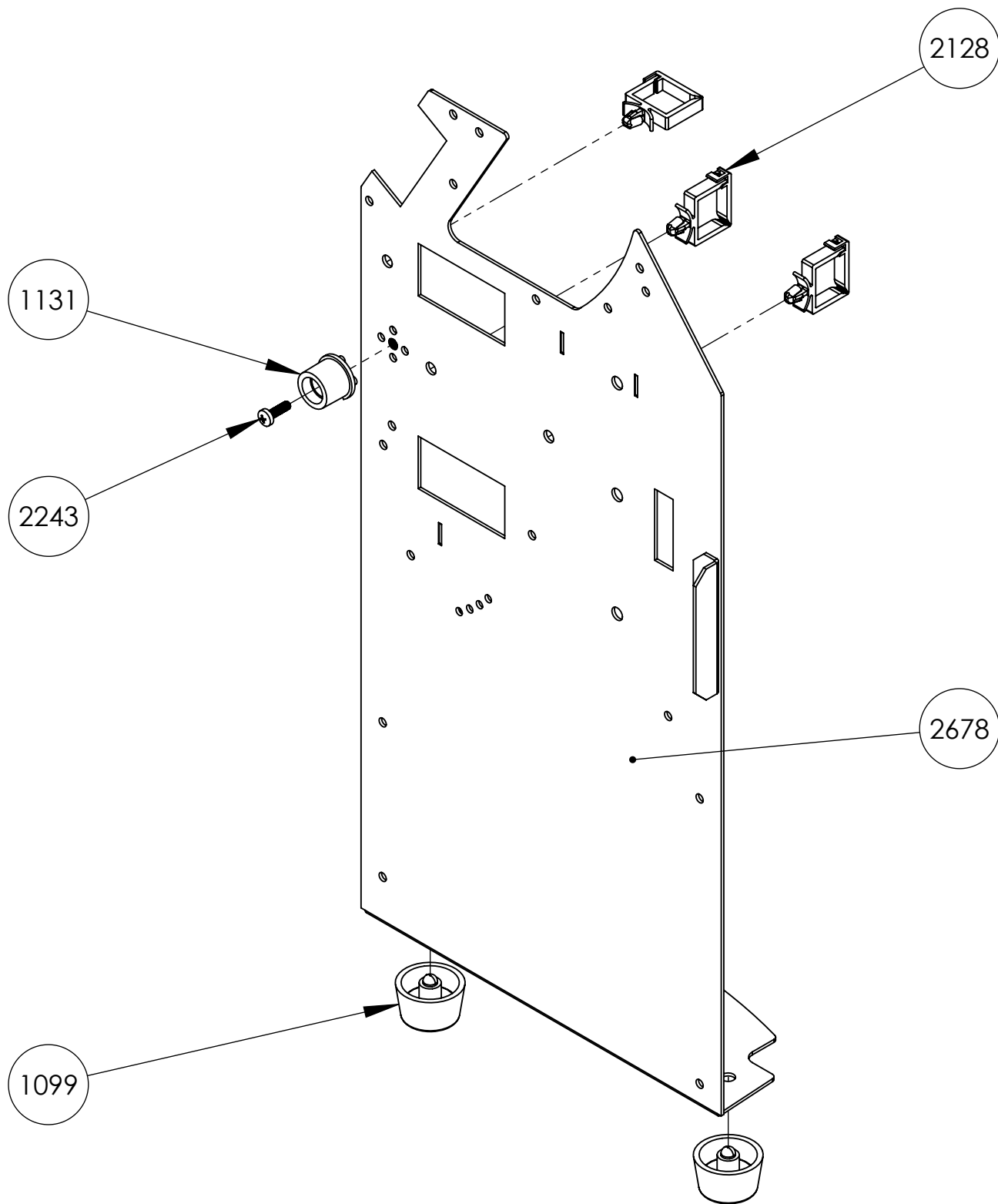
This document must not be copied without our written permission, and the contents thereof must not be imparted to a third party nor be used for any unauthorized purpose. Contravention will be prosecuted.



1041	Screw RXK ST2,9x6,5-fzb	1
1015	Screw MRX M3x6 fzb black	2
2223	Cable Grommet	1
1071	Twist lock	2
2084	Paper Sensor	1
2244	Screw MC6S 8.8 M6x8 fzb	4
2264	Lock Washer AZ6,4 fzb	4
2243	Screw MRX M3x10 fzb	1
1133	Holder axle attachment left	1
1099	Feet High	2
2680	Embossor Head Sensor Bracket	1
1910	Stepper Motor Paper	1
2679	Plate Side Right	1
Part Number	Part Name	QTY



Owner	Part Name				
	<b>Plate Side Right Motor Module</b>				
Part Number	2695	Drawn by	Mattias	Approved by	Janne
Date	2016-12-07	Format	A3	Scale	1:1
		Revision	-	Sheet	1/1



2243	Screw MRX M3x10 fzb	1
1099	Feet High	2
2128	Cable Holder	3
1131	Holder axle attachment right	1
2678	Plate Side Left	1
Part Number	Part Name	QTY

This document must not be copied without our written permission, and the contents thereof must not be imparted to a third party nor be used for any unauthorized purpose. Contravention will be prosecuted.



Owner		Part Name		Scale	
<b>INDEX BRAILLE</b>		<b>Plate Side Left Module V5</b>		1:1	
		Part Number	2719	Drawn by	Mattias
Date	2016-12-07	Format	A3	Revision	-
				Sheet	1/1