

# **How To Use IbPrint 6**

2012-09-27

## Table of content

Introduction.....	3
The Graphical User Interface.....	3
Options.....	4
The Command Line Interface.....	5
Usage:.....	5
Code pages.....	5

## Introduction

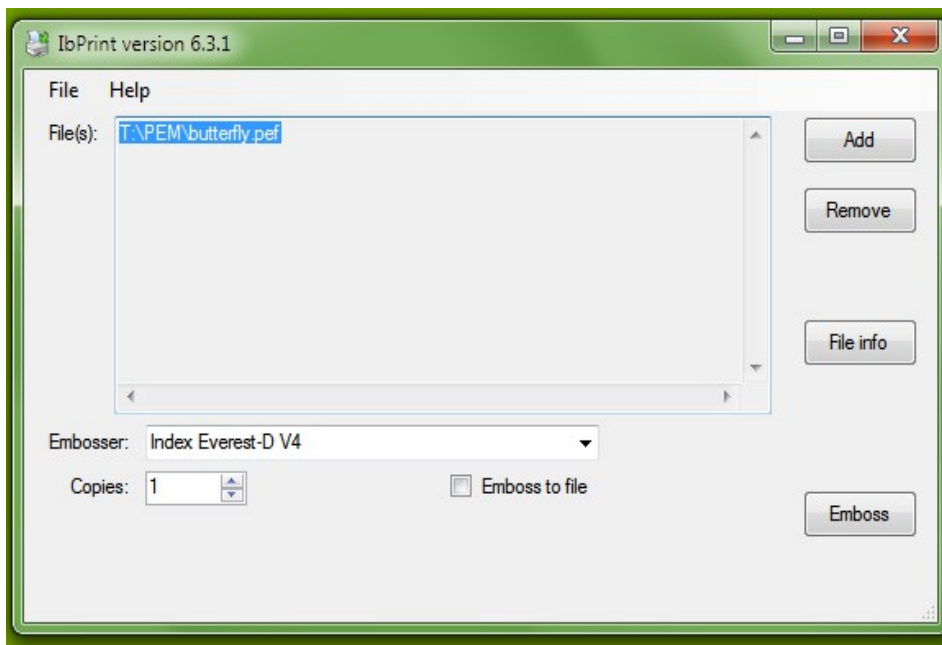
IbPrint is a tool for sending files to a Index Braille Embosser.

One can add/delete files to/from a list for embossing, set number of copies of the documents and even make some simple braille translation if using OpenOffice Writer files (this is though rather experimental).

Supported files are: pef, txt, odt, brf and ibe which may contain Firmware, Braille tables and speech files.

Files can be dragged to the icon on the desktop or to the opened program itself. If one right click on a file in an explorer window one can use the send to menu option to add files to IbPrint.

## The Graphical User Interface



*Illustration 1: The graphical user interface*

To add files to IbPrint: Drag a file or files to IbPrint or press the “Add”-button to browse for files.

To remove a file press the “Remove”-button.

To remove all files choose menu item File/Remove all files from the list.

The “File info”-button shows some information about a selected file and the first 50 characters of the first 14 lines of the file.

Emboss to file creates a file with all bytes that would have been sent to the embosser. A unique number and .prn is added to the document name. This file is saved in the same folder as the original document.

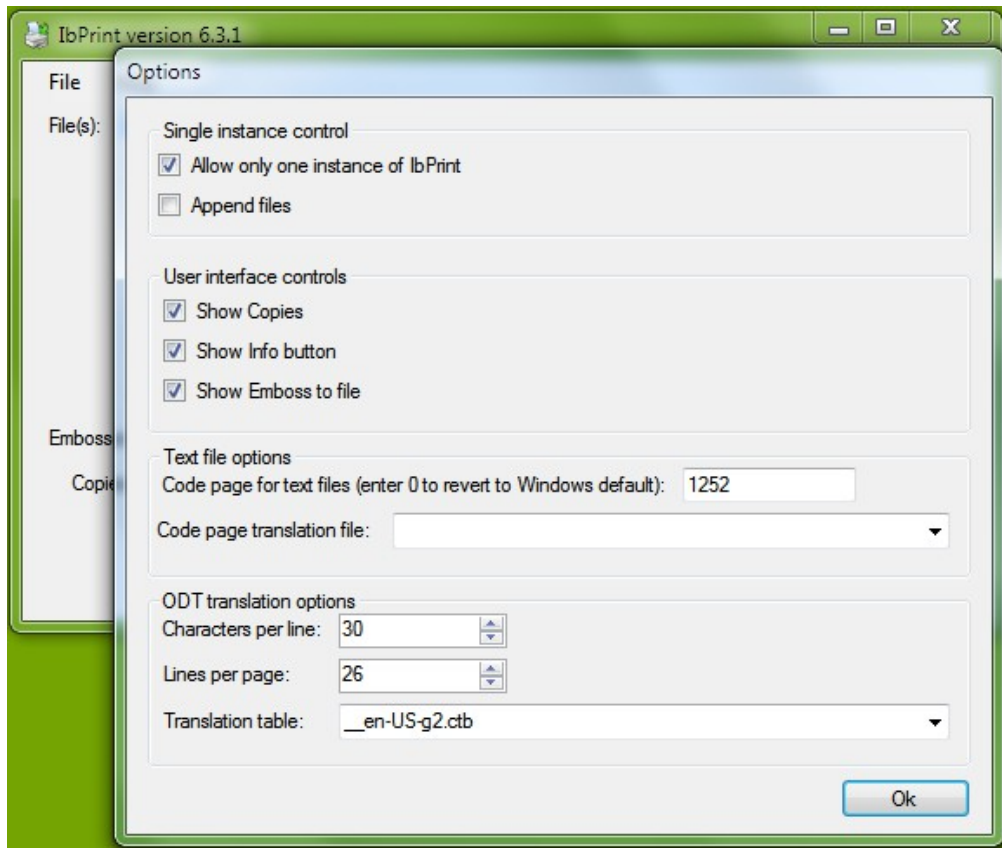
Embosser list can be updated by selecting “- Update embosser list -”.

Menu item “Help/About” is useful to see where the settings file is stored and to show what code

page is used when reading txt-files.

## Options

Menu item File/Options shows a settings dialogue (Illustration 2).



*Illustration 2: Options dialog*

- Allow only one instance of IbPrint: If not checked the send to option when right clicking on a file will start a new instance of IbPrint. This may result in several opened IbPrint application, cluttering the screen. Some like it that way but most of us don't.
- Append files: If checked the sent to option when right clicking on a file will add the file to the list in IbPrint. If not checked this will replace existing files in the list.
- Show copies: If checked one can set number of copies to emboss of all files in list.
- Show info button: Show/hide the Info button.
- Code page for text files: One can set the code page to use when reading a plain text file.
- Code page translation file: One can choose a file for translating one code page to another.
- Characters per line: Is used when embossing Open Office Writer files.
- Lines per page: Is used when embossing OpenOffice Writer files.
- Translation table: Is used when embossing OpenOffice Writer files.

## The Command Line Interface

IbPrint offers you to emboss from the command line or invoke printing from another program.

### Usage:

IbPrint [/F "file"] [/E "embosser"] [/C number of copies] [/T "a text"] [/Q] [/H]

/F "file name"	Can be multiple files separated by space and surrounded by " ".
/E "embosser name"	If omitted the last used embosser will be selected.
/C x	Number of copies. Max is 50. Default is one. The data is only sent once but the embosser embosses it x times.
/O code page	Set code page for txt-files. Default is Windows default.
/T "my text"	Emboss an US-ASCII-text.
/P code page	Set code page for /T text. Default is 437.
/Q	Quit after data has been sent to embosser.
/H	Help, shows this help.
/?	Same as /H.

Options are not case sensitive e.g. /F and /f are equal.

Examples:

```
IbPrint /F "my file.txt" "my second file.brf" /e "Index Basic-D V4" /C 5 /Q  
IbPrint /E "Index Basic-D V4" /T "hello world"
```

If no embosser is selected from command line, then IbPrint is started but doesn't send the file to an embosser, it though selects the last used embosser.

## Code pages

Code Page	Name	Display Name
37	IBM037	IBM EBCDIC (US-Canada)
437	IBM437	OEM United States
500	IBM500	IBM EBCDIC (International)
708	ASMO-708	Arabic (ASMO 708)
720	DOS-720	Arabic (DOS)
737	ibm737	Greek (DOS)
775	ibm775	Baltic (DOS)
850	ibm850	Western European (DOS)
852	ibm852	Central European (DOS)
855	IBM855	OEM Cyrillic
857	ibm857	Turkish (DOS)

858	IBM00858	OEM Multilingual Latin I
860	IBM860	Portuguese (DOS)
861	ibm861	Icelandic (DOS)
862	DOS-862	Hebrew (DOS)
863	IBM863	French Canadian (DOS)
864	IBM864	Arabic (864)
865	IBM865	Nordic (DOS)
866	cp866	Cyrillic (DOS)
869	ibm869	Greek, Modern (DOS)
870	IBM870	IBM EBCDIC (Multilingual Latin-2)
874	windows-874	Thai (Windows)
875	cp875	IBM EBCDIC (Greek Modern)
932	shift_jis	Japanese (Shift-JIS)
936	gb2312	Chinese Simplified (GB2312)
949	ks_c_5601-1987	Korean
950	big5	Chinese Traditional (Big5)
1026	IBM1026	IBM EBCDIC (Turkish Latin-5)
1047	IBM01047	IBM Latin-1
1140	IBM01140	IBM EBCDIC (US-Canada-Euro)
1141	IBM01141	IBM EBCDIC (Germany-Euro)
1142	IBM01142	IBM EBCDIC (Denmark-Norway-Euro)
1143	IBM01143	IBM EBCDIC (Finland-Sweden-Euro)
1144	IBM01144	IBM EBCDIC (Italy-Euro)
1145	IBM01145	IBM EBCDIC (Spain-Euro)
1146	IBM01146	IBM EBCDIC (UK-Euro)
1147	IBM01147	IBM EBCDIC (France-Euro)
1148	IBM01148	IBM EBCDIC (International-Euro)
1149	IBM01149	IBM EBCDIC (Icelandic-Euro)
1200	utf-16	Unicode
1201	unicodeFFFE	Unicode (Big-Endian)
1250	windows-1250	Central European (Windows)
1251	windows-1251	Cyrillic (Windows)
1252	Windows-1252	Western European (Windows)
1253	windows-1253	Greek (Windows)
1254	windows-1254	Turkish (Windows)

1255	windows-1255	Hebrew (Windows)
1256	windows-1256	Arabic (Windows)
1257	windows-1257	Baltic (Windows)
1258	windows-1258	Vietnamese (Windows)
1361	Johab	Korean (Johab)
10000	macintosh	Western European (Mac)
10001	x-mac-japanese	Japanese (Mac)
10002	x-mac-chinesetrad	Chinese Traditional (Mac)
10003	x-mac-korean	Korean (Mac)
10004	x-mac-arabic	Arabic (Mac)
10005	x-mac-hebrew	Hebrew (Mac)
10006	x-mac-greek	Greek (Mac)
10007	x-mac-cyrillic	Cyrillic (Mac)
10008	x-mac-chinesesimp	Chinese Simplified (Mac)
10010	x-mac-romanian	Romanian (Mac)
10017	x-mac-ukrainian	Ukrainian (Mac)
10021	x-mac-thai	Thai (Mac)
10029	x-mac-ce	Central European (Mac)
10079	x-mac-icelandic	Icelandic (Mac)
10081	x-mac-turkish	Turkish (Mac)
10082	x-mac-croatian	Croatian (Mac)
20000	x-Chinese-CNS	Chinese Traditional (CNS)
20001	x-cp20001	TCA Taiwan
20002	x-Chinese-Eten	Chinese Traditional (Eten)
20003	x-cp20003	IBM5550 Taiwan
20004	x-cp20004	TeleText Taiwan
20005	x-cp20005	Wang Taiwan
20105	x-IA5	Western European (IA5)
20106	x-IA5-German	German (IA5)
20107	x-IA5-Swedish	Swedish (IA5)
20108	x-IA5-Norwegian	Norwegian (IA5)
20127	us-ascii	US-ASCII
20261	x-cp20261	T.61
20269	x-cp20269	ISO-6937
20273	IBM273	IBM EBCDIC (Germany)

20277	IBM277	IBM EBCDIC (Denmark-Norway)
20278	IBM278	IBM EBCDIC (Finland-Sweden)
20280	IBM280	IBM EBCDIC (Italy)
20284	IBM284	IBM EBCDIC (Spain)
20285	IBM285	IBM EBCDIC (UK)
20290	IBM290	IBM EBCDIC (Japanese katakana)
20297	IBM297	IBM EBCDIC (France)
20420	IBM420	IBM EBCDIC (Arabic)
20423	IBM423	IBM EBCDIC (Greek)
20424	IBM424	IBM EBCDIC (Hebrew)
20833	x-EBCDIC-KoreanExtended	Extended IBM EBCDIC (Korean Extended)
20838	IBM-Thai	IBM EBCDIC (Thai)
20866	koi8-r	Cyrillic (KOI8-R)
20871	IBM871	IBM EBCDIC (Icelandic)
20880	IBM880	IBM EBCDIC (Cyrillic Russian)
20905	IBM905	IBM EBCDIC (Turkish)
20924	IBM00924	IBM Latin-1
20932	EUC-JP	Japanese (JIS 0208-1990 and 0212-1990)
20936	x-cp20936	Chinese Simplified (GB2312-80)
20949	x-cp20949	Korean Wansung
21025	cp1025	IBM EBCDIC (Cyrillic Serbian-Bulgarian)
21866	koi8-u	Cyrillic (KOI8-U)
28591	iso-8859-1	Western European (ISO)
28592	iso-8859-2	Central European (ISO)
28593	iso-8859-3	Latin 3 (ISO)
28594	iso-8859-4	Baltic (ISO)
28595	iso-8859-5	Cyrillic (ISO)
28596	iso-8859-6	Arabic (ISO)
28597	iso-8859-7	Greek (ISO)
28598	iso-8859-8	Hebrew (ISO-Visual)
28599	iso-8859-9	Turkish (ISO)
28603	iso-8859-13	Estonian (ISO)
28605	iso-8859-15	Latin 9 (ISO)
29001	x-Europa	Europa
38598	iso-8859-8-i	Hebrew (ISO-Logical)



50220	iso-2022-jp	Japanese (JIS)
50221	csISO2022JP	Japanese (JIS-Allow 1 byte Kana)
50222	iso-2022-jp	Japanese (JIS-Allow 1 byte Kana - SO/SI)
50225	iso-2022-kr	Korean (ISO)
50227	x-cp50227	Chinese Simplified (ISO-2022)
51932	euc-jp	Japanese (EUC)
51936	EUC-CN	Chinese Simplified (EUC)
51949	euc-kr	Korean (EUC)
52936	hz-gb-2312	Chinese Simplified (HZ)
54936	GB18030	Chinese Simplified (GB18030)
57002	x-iscii-de	ISCII Devanagari
57003	x-iscii-be	ISCII Bengali
57004	x-iscii-ta	ISCII Tamil
57005	x-iscii-te	ISCII Telugu
57006	x-iscii-as	ISCII Assamese
57007	x-iscii-or	ISCII Oriya
57008	x-iscii-ka	ISCII Kannada
57009	x-iscii-ma	ISCII Malayalam
57010	x-iscii-gu	ISCII Gujarati
57011	x-iscii-pa	ISCII Punjabi
65000	utf-7	Unicode (UTF-7)
65001	utf-8	Unicode (UTF-8)
65005	utf-32	Unicode (UTF-32)
65006	utf-32BE	Unicode (UTF-32 Big-Endian)