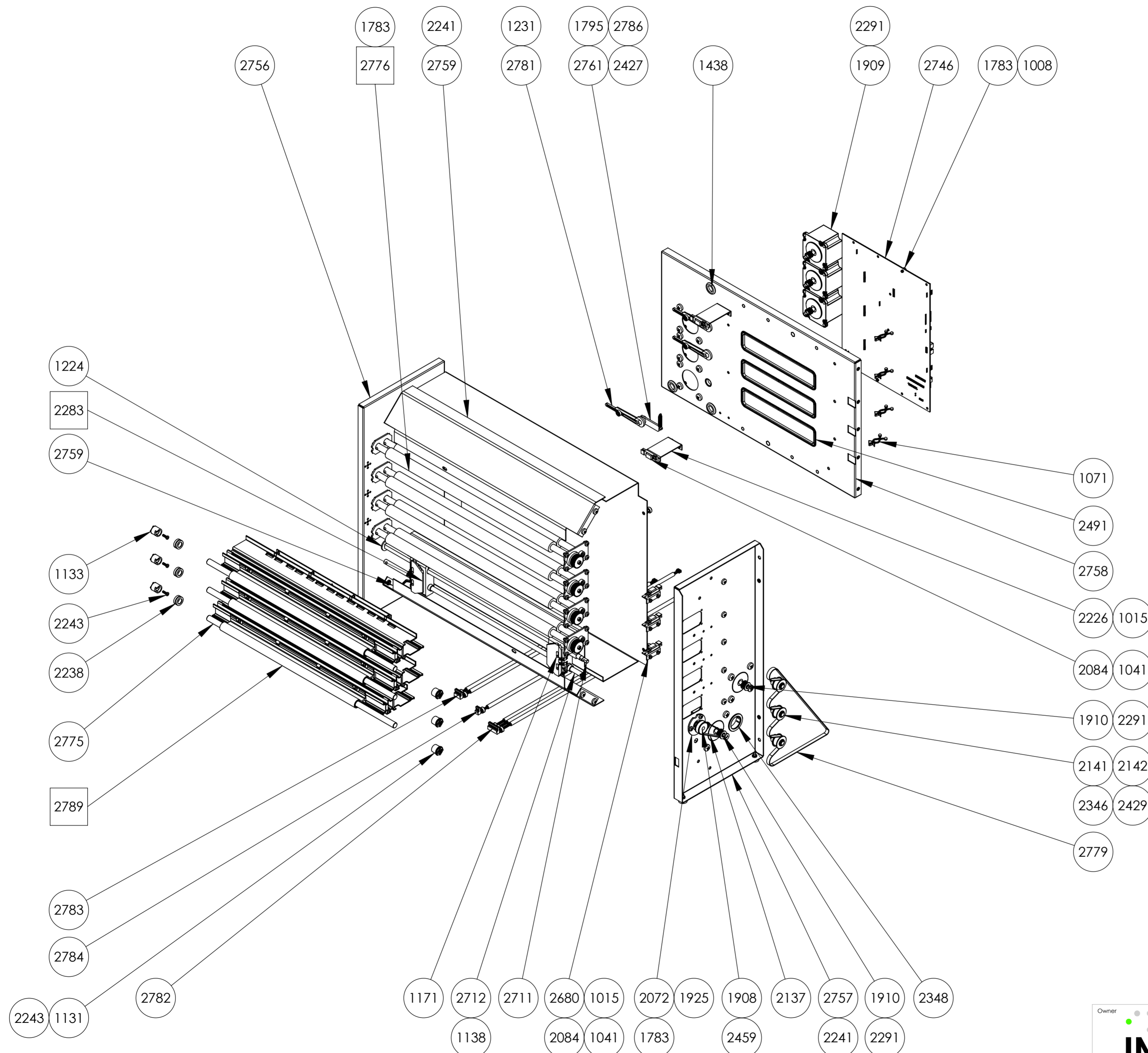


X = Spare parts on separate sheet.



2789	Embosser Head FanFold	3
2786	Tension Spring	3
2784	Cable Paper Out Sensor	1
2783	Cable Paper In Sensor, Tractor	1
2782	Cable Embosser Hear Sensor	1
2781	Plastic Arm	3
2779	Timing Belt	1
2776	Shaft Module	4
2775	Axle 10x458	3
2761	Arm Fanfold	3
2760	PCB Cover	1
2759	Paper Guide FanFold	2
2758	Plate Center FanFold	1
2757	End Plate Right FanFold	1
2756	End Plate Left FanFold	1
2746	Braille Box Driver PCB V5	1
2712	Axle D8mm FanFold	1
2711	Axle 8x8	1
2680	Embosser Head Sensor Bracket	3
2491	Edge Protection Profile AMB-1	3
2459	Hexagon Socket Set Screw DIN916 M4x5	1
2429	Screw MC6S 8.8 M4x8 fzb	3
2427	Screw PT-WN 1442 3,5x14 fzb	3
2348	Snap In Bushing	1
2346	E-Clip RS5 fzb	3
2291	Screw MRX M6x12 fzb	17
2283	Tractor Left Sensor Side	1
2243	Screw MRX M3x10 fzb	6
2241	Screw MRX M5x6 fzb	18
2238	Locking Ring	3
2226	Bracket Paper Sensor	2
2142	Idler Pulley	3
2141	Pulley Stub Axle	3
2137	Timing Belt	1
2084	Paper Sensor	5
2072	Ball Bearing Cover	1
1925	Ballbearing F608-ZZ	1
1910	Stepper Motor Paper	2
1909	Stepper Motor Head	3
1908	Pulley 36 step	1
1795	Washer DIN9021 4,3x12x1 fzb	3
1783	Screw MRX M4x6 fzb	21
1438	Cable Grommet	3
1231	Ballbearing 623-ZZ	3
1224	Holder bearing gliding tractor	1
1171	Tractor Right	1
1138	Position clips	3
1133	Holder axle attachment left	3
1131	Holder axle attachment right	3
1108	Feet rubber with screw M4	4
1071	Twist lock	4
1041	Screw RXK ST2,9x6,5-fzb	5
1015	Screw MRX M3x6 fzb black	10
1008	Lock Washer AZ4,3 fzb	2
Part Number	Part Name	QTY

Owner

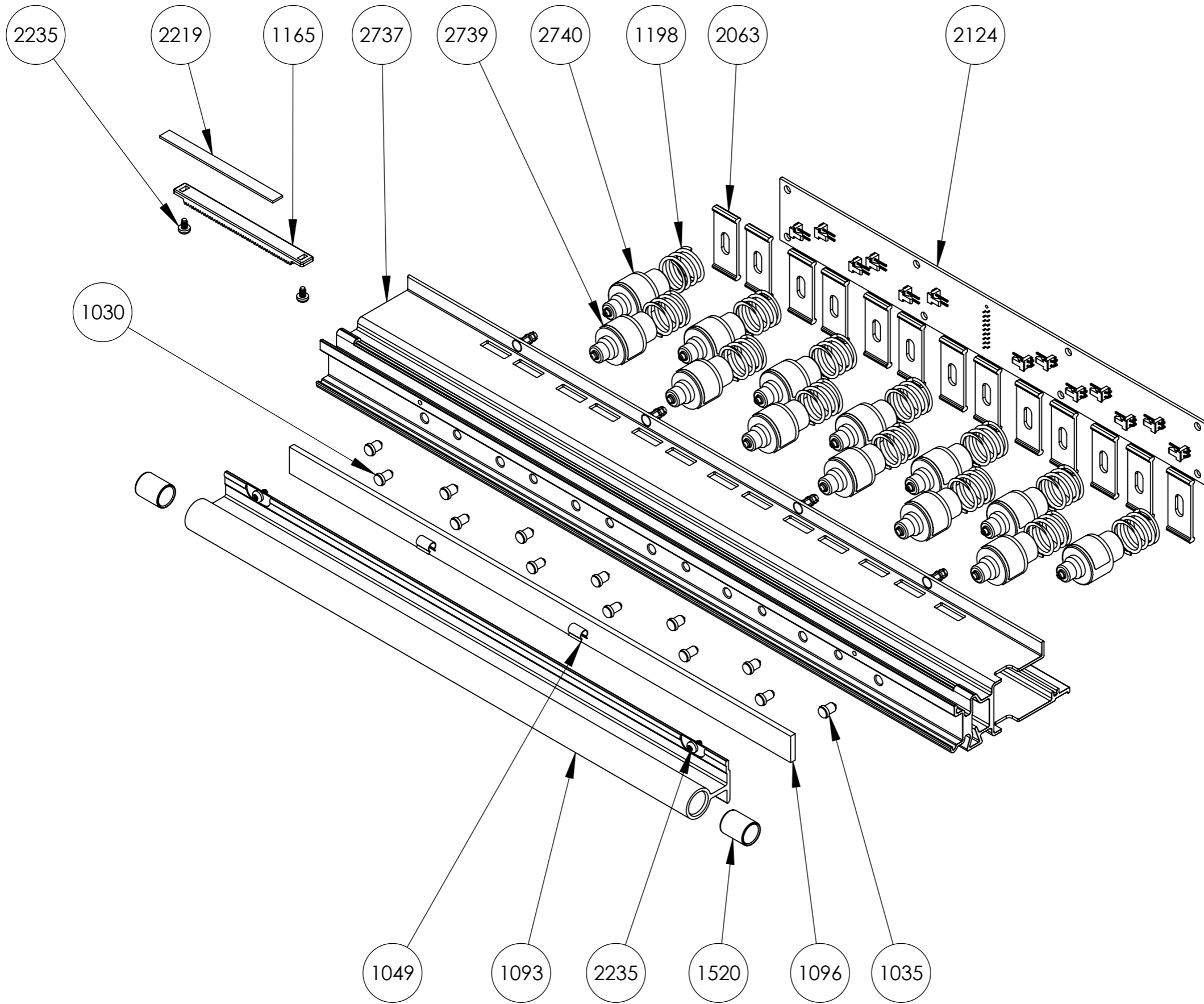
Part Name **Index Fanfold-D**

Part Number **2777**

Drawn by **Mattias** Approved by **Janne** Format **A2** Scale **1:1**

Date **2017-07-05** Revision **-** Sheet **1/1**

This document must not be copied without our written permission, and the contents thereof must not be imparted to a third party nor be used for any unauthorized purpose. Contravention will be prosecuted.



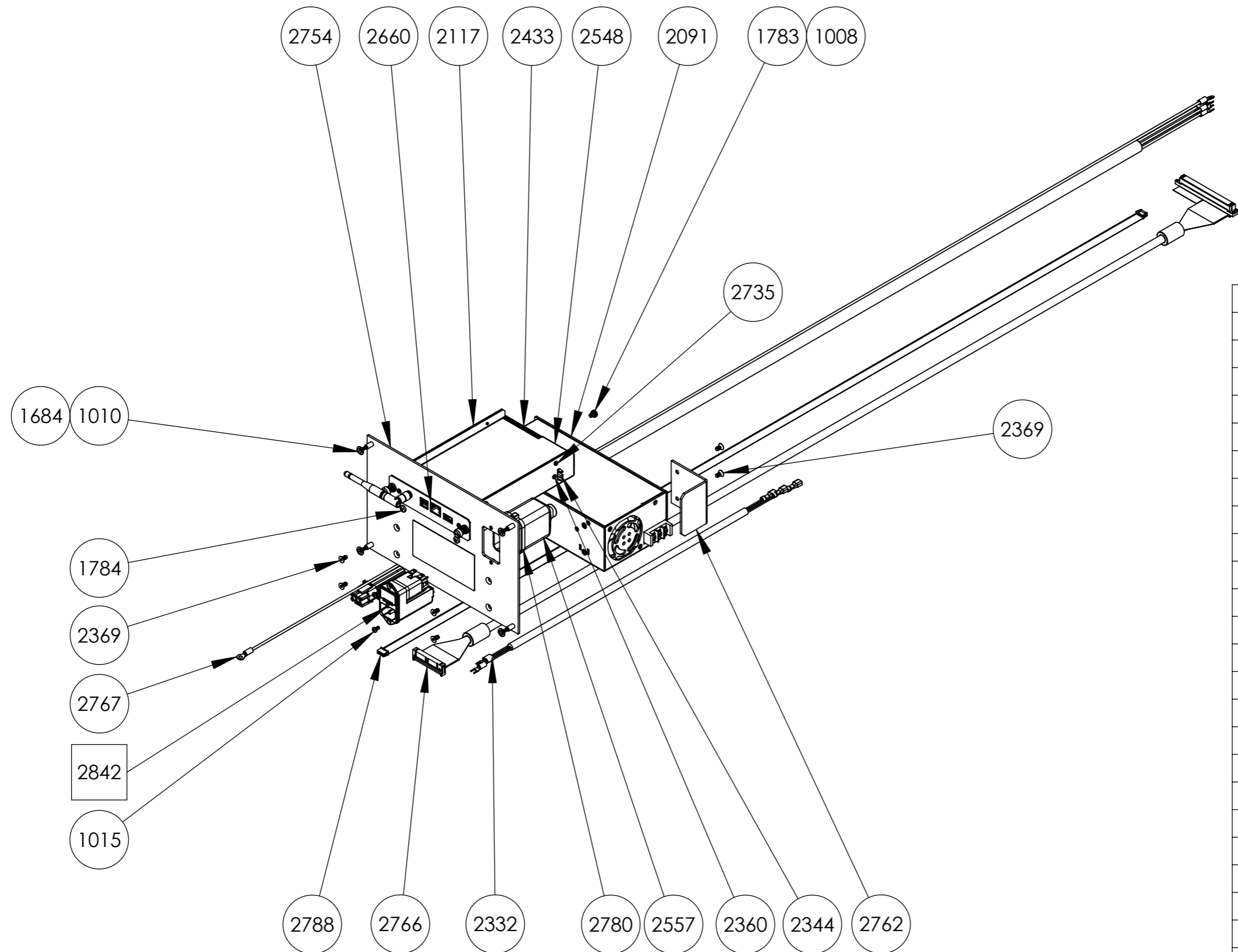
2740	Hammer Negative	7
2739	Hammer Positiv	6
2737	Profile Hammer FanFold	1
2235	Screw RXK ST2,9x4,5 fzb	4
2219	Embosser Head Plastic	1
2124	Bord Embossing Head PCB V4	1
2063	Profile Hammer Lid	13
1520	Slide Bearing	2
1198	Spring for hammer	13
1165	Gear bar, embosser head	1
1096	Rubber damper	1
1093	Profile Bearing	1
1049	Holder clips Embosser Head	2
1035	Anvil Positive	7
1030	Anvil Negative	6
Part Number	Part Name	QTY

This document must not be copied without our written permission, and the contents thereof must not be imparted to a third party nor be used for any unauthorized purpose. Contravention will be prosecuted.



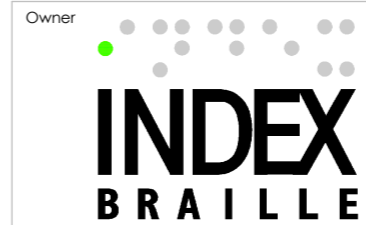
Part Name		Embosser Head FanFold	
Part Number		2789	
Drawn by	Approved by	Format	Scale
Mattias	Janne	A3	1:1
Date	Revision	Sheet	
2017-06-21	-	1/1	

This document must not be copied without our written permission, and the contents thereof must not be imparted to a third party nor be used for any unauthorized purpose. Contravention will be prosecuted.



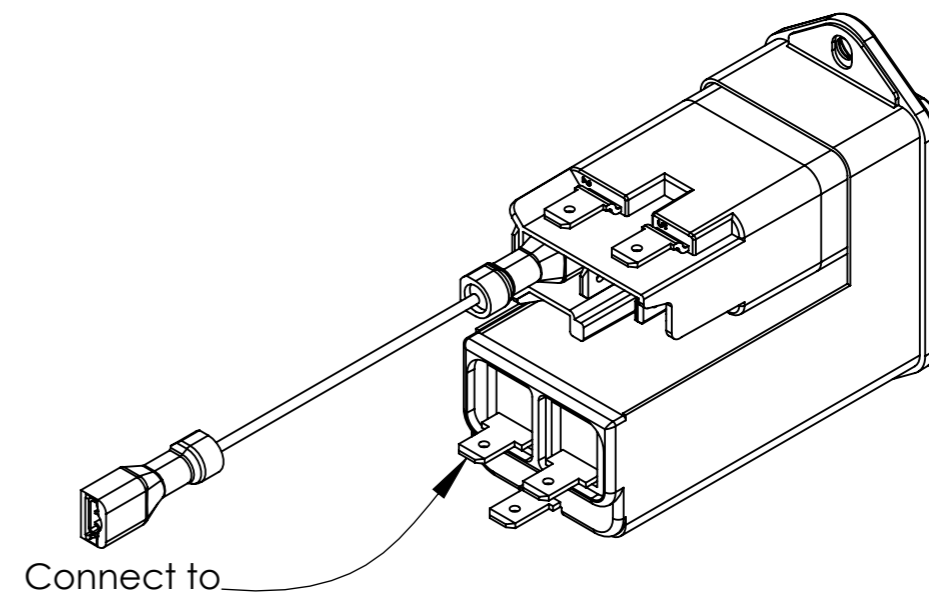
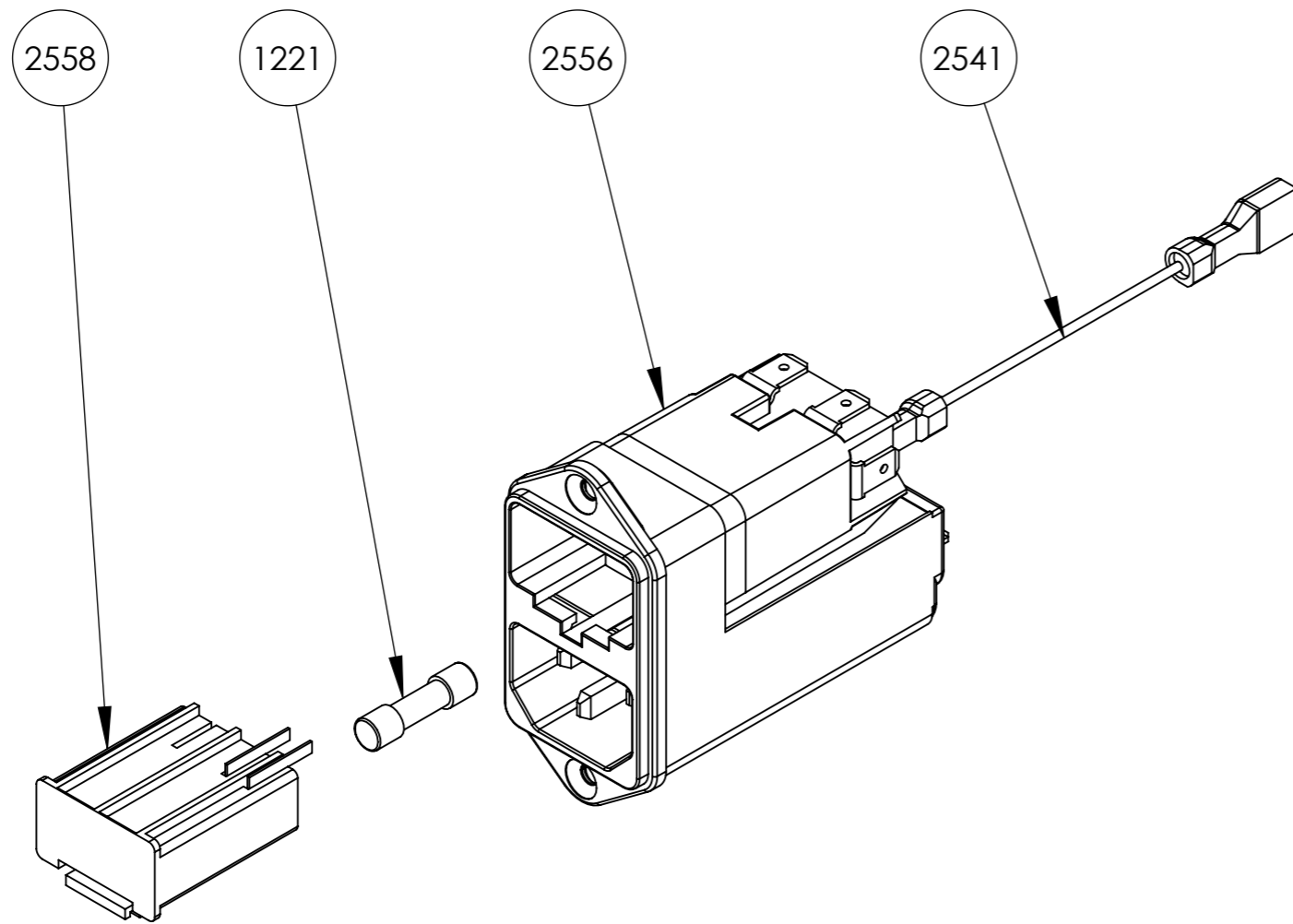
2842	Power Inlet Module	1
2788	Power Supply Control Cable	1
2780	Cable Tie 300x4,6	1
2767	Cable Power Supply to 1362-B	1
2766	InterConnection 1362A to 1362B	1
2762	Safety Cover Fanfold	1
2754	Bracket Electrical Module	1
2735	Screw MRX M2,5x4 fzb	4
2660	BB CPU PCB V5 Module	1
2557	Power Input Insulation	1
2548	Plate CPU Cover	1
2433	Edge Protection Profile AMB-1	1
2369	Screw MF6S 8.8 M4x8 fzb	6
2361	Nut M6M M2,5 fzb	4
2360	Screw MRX M2,5x10 fzb	4
2344	Guide Rail 160mm	1
2332	Cable Inlet to Power Supply	1
2117	Plate PCB-Board Holder	1
2091	Power Supply	1
1784	Screw MRX M4x8 fzb	2
1783	Screw MRX M4x6 fzb	1
1684	Washer SRB ST 4x10x1 fzb	4
1015	Screw MRX M3x6 fzb black	2
1010	Screw MRX M3x16 fzb	4
1008	Lock Washer AZ4,3 fzb	1
Part Number	Part Name	QTY

X = Spare parts on separate sheet.



Owner		Part Name	
		Electrical Module Fanfold	
		Part Number	Scale
2778		1:1	
Drawn by	Approved by	Format	Sheet
Mattias	Janne	A3	1/1
Date	Revision	Sheet	
2017-07-10	-	1/1	

This document must not be copied without our written permission, and the contents thereof must not be imparted to a third party nor be used for any unauthorized purpose. Contravention will be prosecuted.



2558	Fusedrawer	1
2556	Appliance Inlet With Filter	1
2541	Jumper Wire to 2332	1
1221	Fuse 5x20 6,3A	1
Part Number	Part Name	QTY



Part Name
Power Inlet Module

Part Number
2842

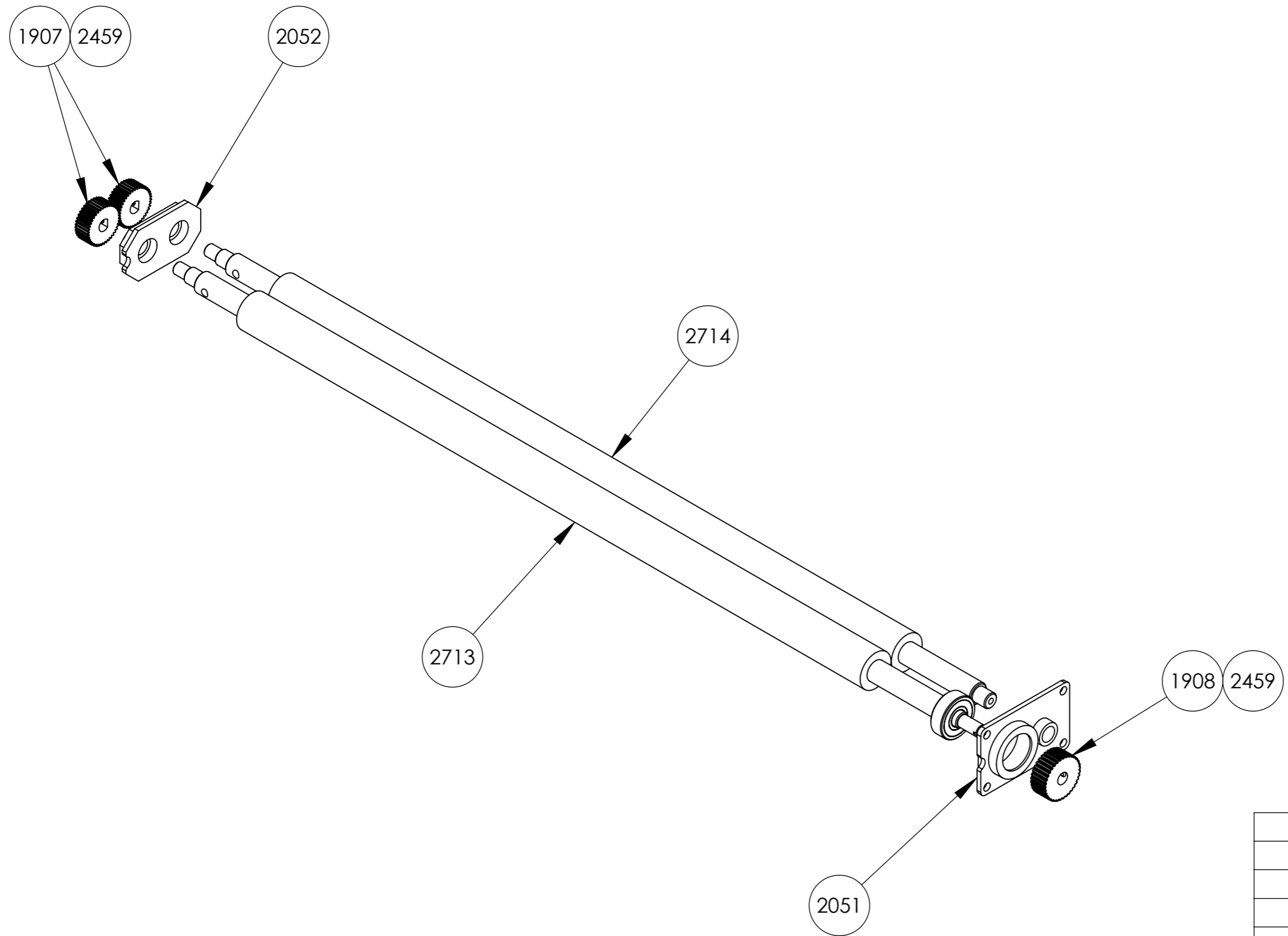
Drawn by
Mattias
 Date
 2017-06-20

Approved by
Janne

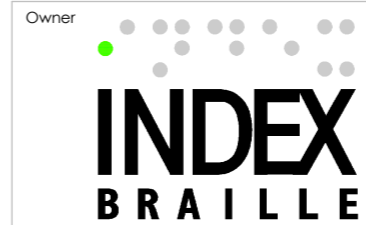
Format
A3
 Scale
1:1

Revision
 -
 Sheet
1/1

This document must not be copied without our written permission, and the contents thereof must not be imparted to a third party nor be used for any unauthorized purpose. Contravention will be prosecuted.

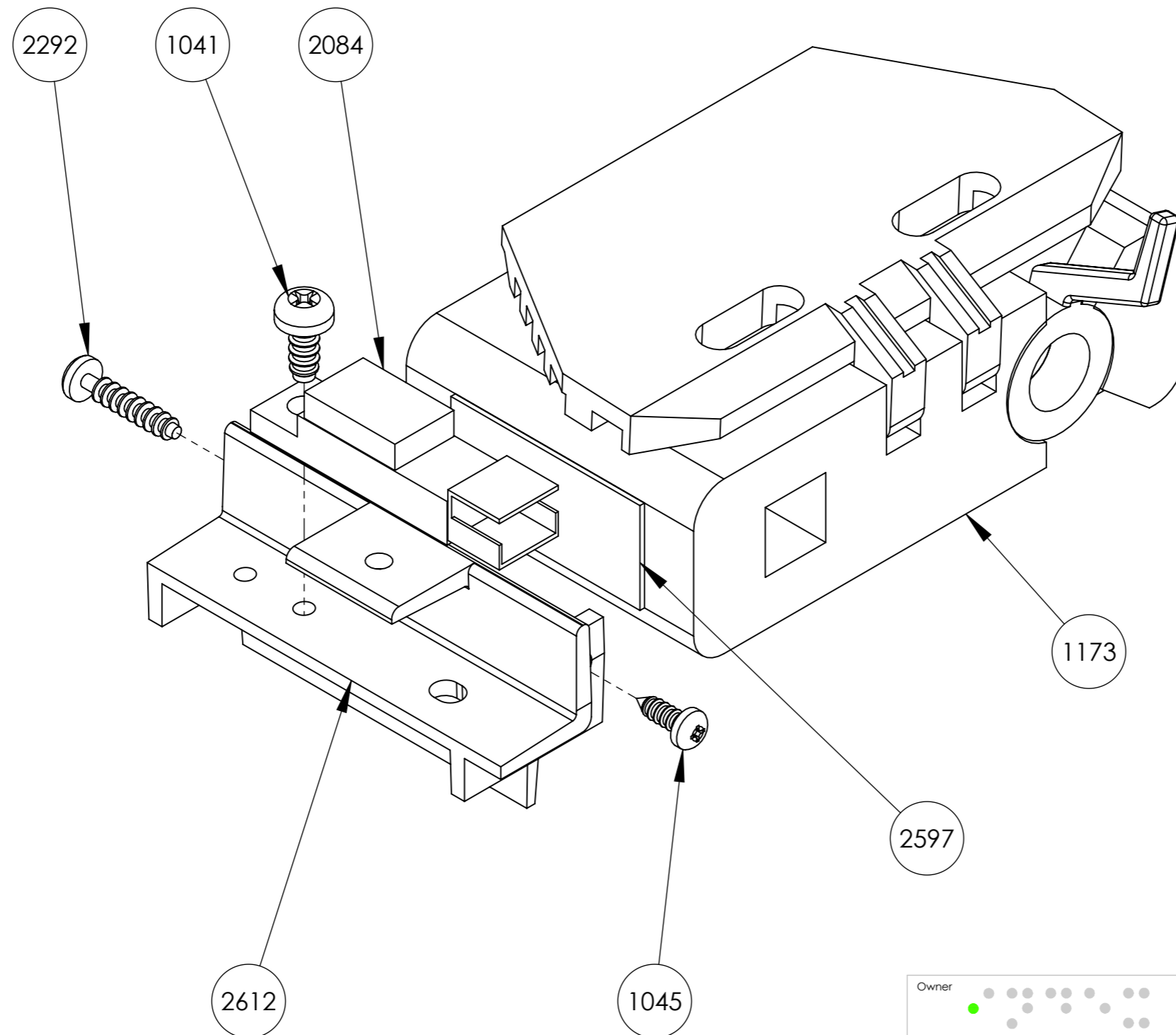


2714	Shaft with rubber	1
2713	Shaft with rubber	1
2459	Hexagon Socket Set Screw DIN916 M4x5	3
2052	Housing bearing Right	1
2051	Housing Bearing Right	1
1908	Pulley 36 step	1
1907	Gear wheel 40 step	2
Part Number	Part Name	QTY



Owner		Part Name	
INDEX BRAILLE		Shaft Module	
		Part Number	2776
Drawn by	Approved by	Format	Scale
Mattias	Janne	A3	1:2
Date	Revision	Sheet	
2017-06-27	-	1/1	

This document must not be copied without our written permission, and the contents thereof must not be imparted to a third party nor be used for any unauthorized purpose. Contravention will be prosecuted.



2597	Tape Attachment Pad	1
2292	Screw WN 1412 2,5x12 fzb	1
2612	Bracket Papersensor	1
2084	Paper Sensor	1
1173	Tractor Left Switch Side	1
1045	Screw RXS ST2,2x6,5 fzb	1
1041	Screw RXK ST2,9x6,5-fzb	1
Part Number	Part Name	QTY



Owner
 Part Name
Tractor Left Sensor Side

Part Number
2283

Drawn by
Mattias
 Date
 2016-09-06

Approved by
Janne

Format
A3
 Scale
1:1
 Revision
 -
 Sheet
1/1