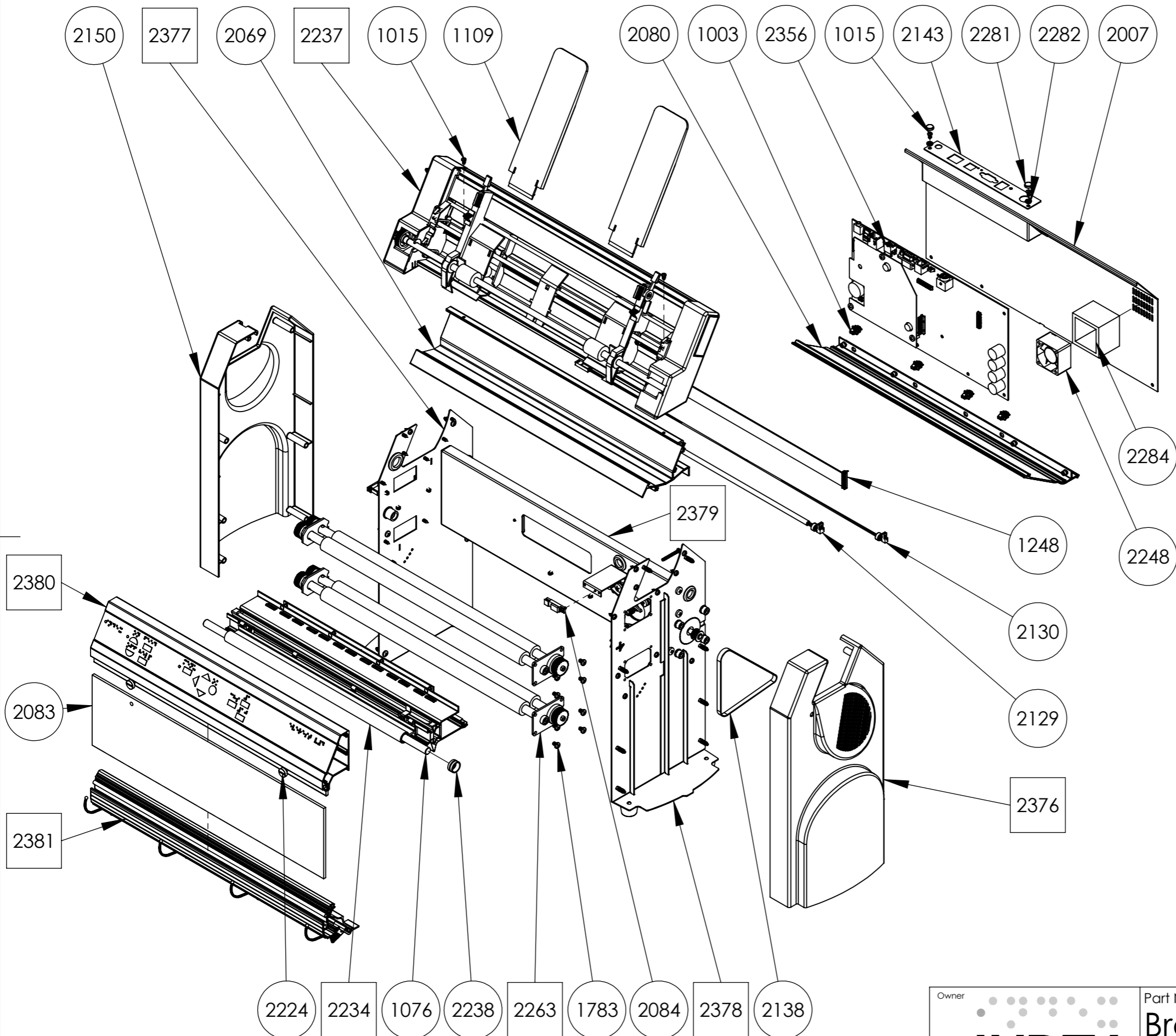


This document must not be copied without our written permission, and the contents thereof must not be imparted to a third party nor be used for any unauthorized purpose. Contravention will be prosecuted.

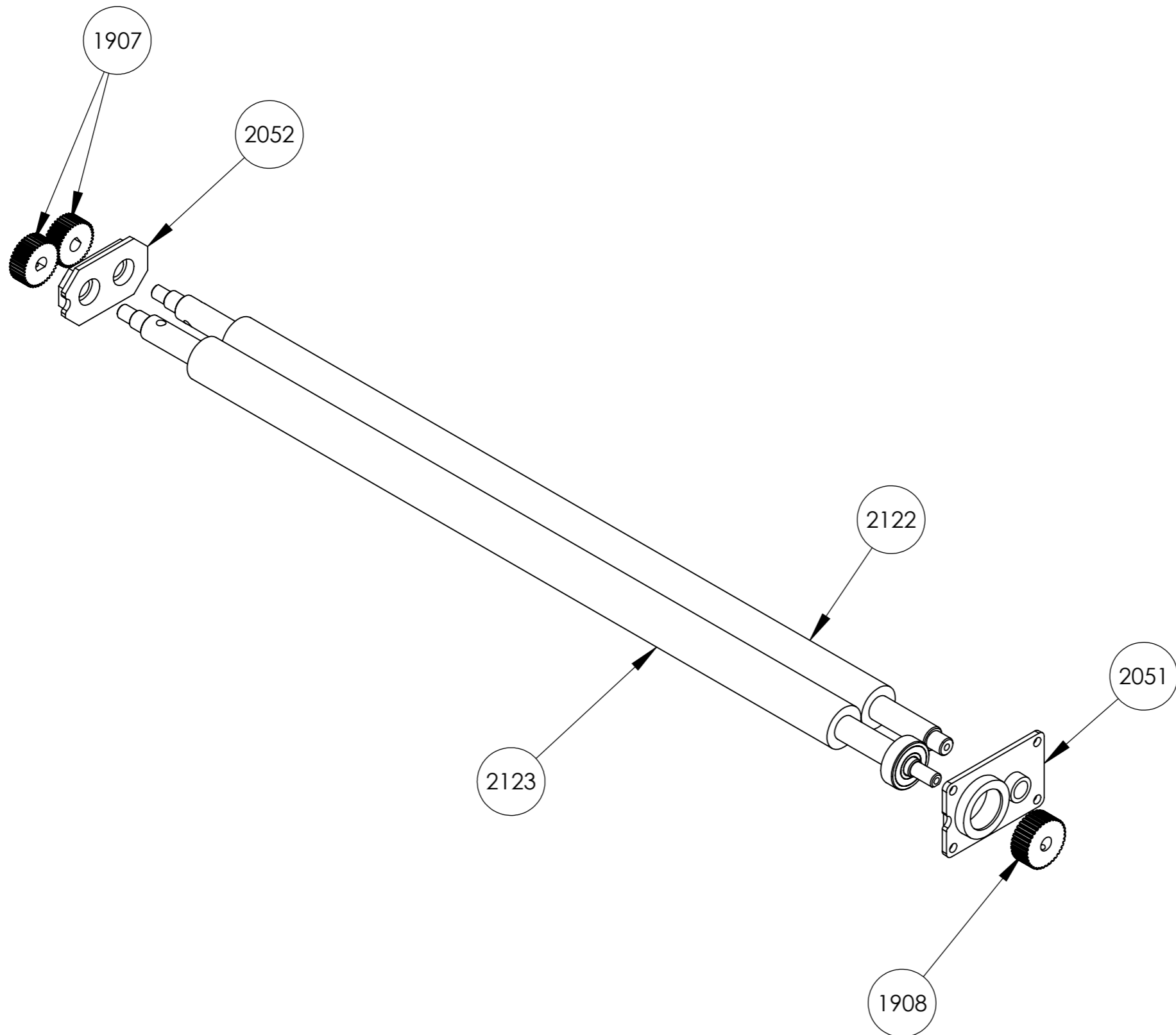


2	Plastic Cap	2281
2	Plastic Washer	2282
14	Screw PT-WN 1442 ST5,0x16 fzb	1050
21	Screw RXS 3,5x9,5-fzb	1293
4	Screw MRX M3x6 fzb black	1015
4	Screw MRX M4x22 fzb	2242
2	Screw MRX M3x30 fzb	1018
1	Screw RXK ST2,9x6,5-fzb	1041
6	Screw MRX M5x6 fzb	2241
8	Screw MRX M4x6 fzb	1783
1	Ventilation shaft for fan	2284
2	Knurled Screw	2224
1	Sheet Feeder Cable	2130
1	Paper Sensor Cable	2129
1	Cable Embosser Head	1248
1	SheetFeeder	2237
2	Paper Support	1109
4	Holder Mainboard	1003
1	Embosser Head Everest	2234
1	Module Main Board PCB V4	2356
1	Casing Right Speaker Module	2376
1	Casing left	2150
1	Plate Interface	2143
1	Plate back	2007
1	Paper Sensor	2084
1	Glass	2083
1	Locking Ring	2238
1	Axle 10x417	1076
1	Fan 40x40x24	2248
1	Timing Belt	2138
2	Shaft Module	2263
1	Profile Front Bottom Module	2381
1	Profile Lower Back	2080
1	Profile Upper Back	2069
1	Profile Panel Module	2380
1	Plate Side Left Module	2377
1	Plate Center Module	2379
1	Plate Side Right Motor Module	2378
QTY	Part Name	Part Number

X = Spare parts on separate sheet.



Owner		Part Name	
		<b>Braille Embosser Everest-D V4</b>	
Part Number		Drawn by	Approved by
<b>2001</b>		Mattias	
Date	Format	Scale	Revision
2012-08-17	A3	1:20	
	Sheet		
	1/1		



2	Gear wheel 40 step	1907
1	Pulley 36 step	1908
1	Housing bearing Right	2052
1	Shaft with rubber	2122
1	Shaft with rubber	2123
1	Housing Bearing Right	2051
QTY	Part Name	Part Number

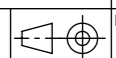


Owner  
Part Name  
**Shaft Module**

Part Number  
**2263**

Drawn by  
**Mattias**  
Date  
2012-08-17

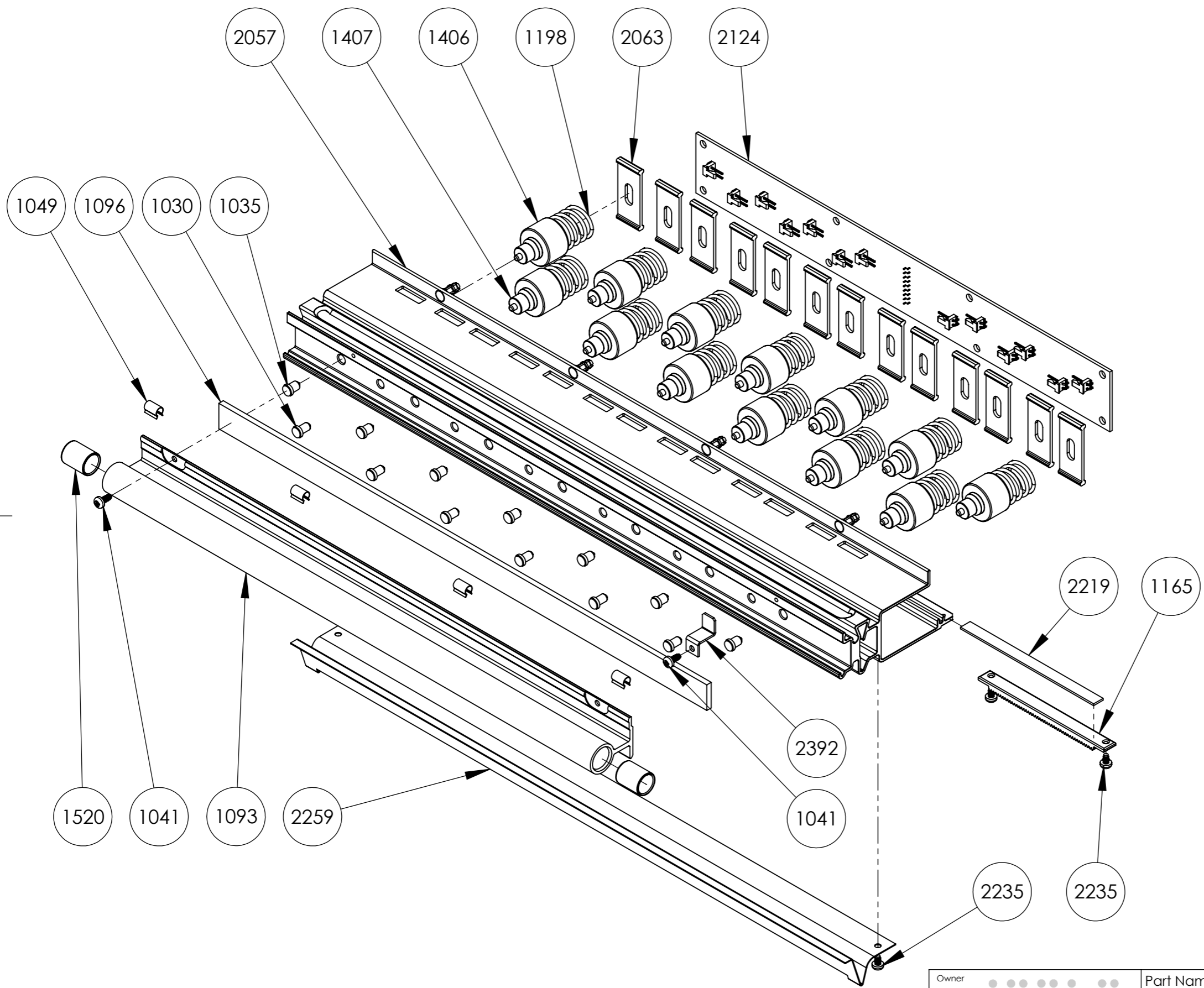
Approved by



Format  
**A3**  
Revision  
**\_+**

Scale  
**1:2**  
Sheet  
**1/1**

This document must not be copied without our written permission, and the contents thereof must not be imparted to a third party nor be used for any unauthorized purpose. Contravention will be prosecuted.

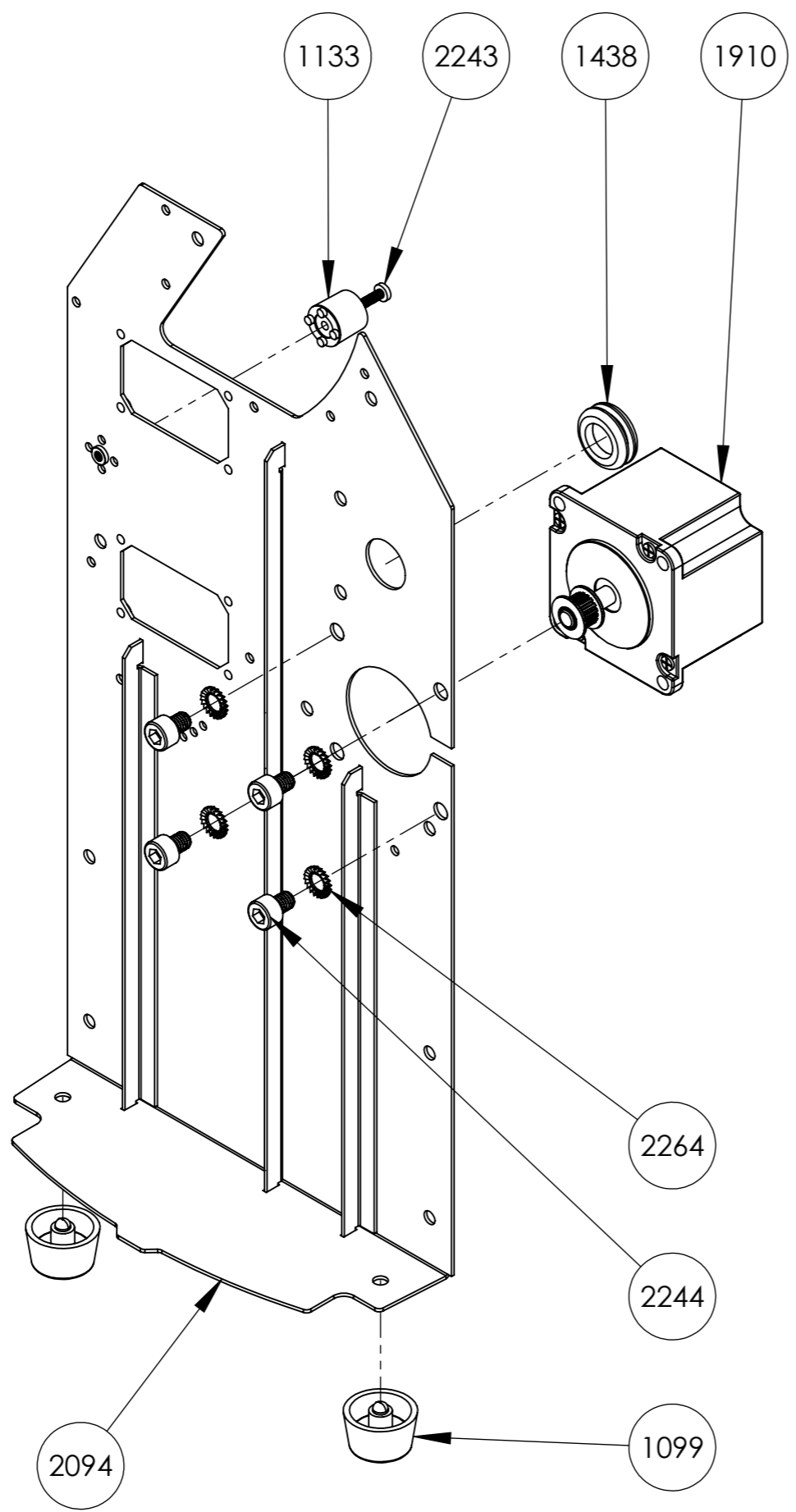


4	Screw RXK ST2,9x4,5 fzb	2235
2	Screw RXK ST2,9x6,5-fzb	1041
6	Hammer Negative	1407
7	Hammer Positive	1406
1	Position Bracket	2392
1	Paper Guide EmbosserHead	2259
13	Spring for hammer	1198
13	Profile Hammer Lid	2063
2	Slide Bearing	1520
4	Holder clips Embosser Head	1049
6	Anvil Negative	1030
7	Anvil Positive	1035
1	Bord Embossing Head PCB V4	2124
1	Embosser Head Plastic	2219
1	Gear bar, embosser head	1165
1	Rubber damper	1096
1	Profile Hammer Everest	2057
1	Profile Bearing	1093
QTY	Part Name	Part Number



Owner		Part Name	
		<b>Embosser Head Everest</b>	
Part Number		Drawn by	Approved by
<b>2234</b>		Mattias	
Date	Format	Scale	Sheet
2012-08-17	A3	1:5	1/1
Revision		Sheet	
_+		1/1	

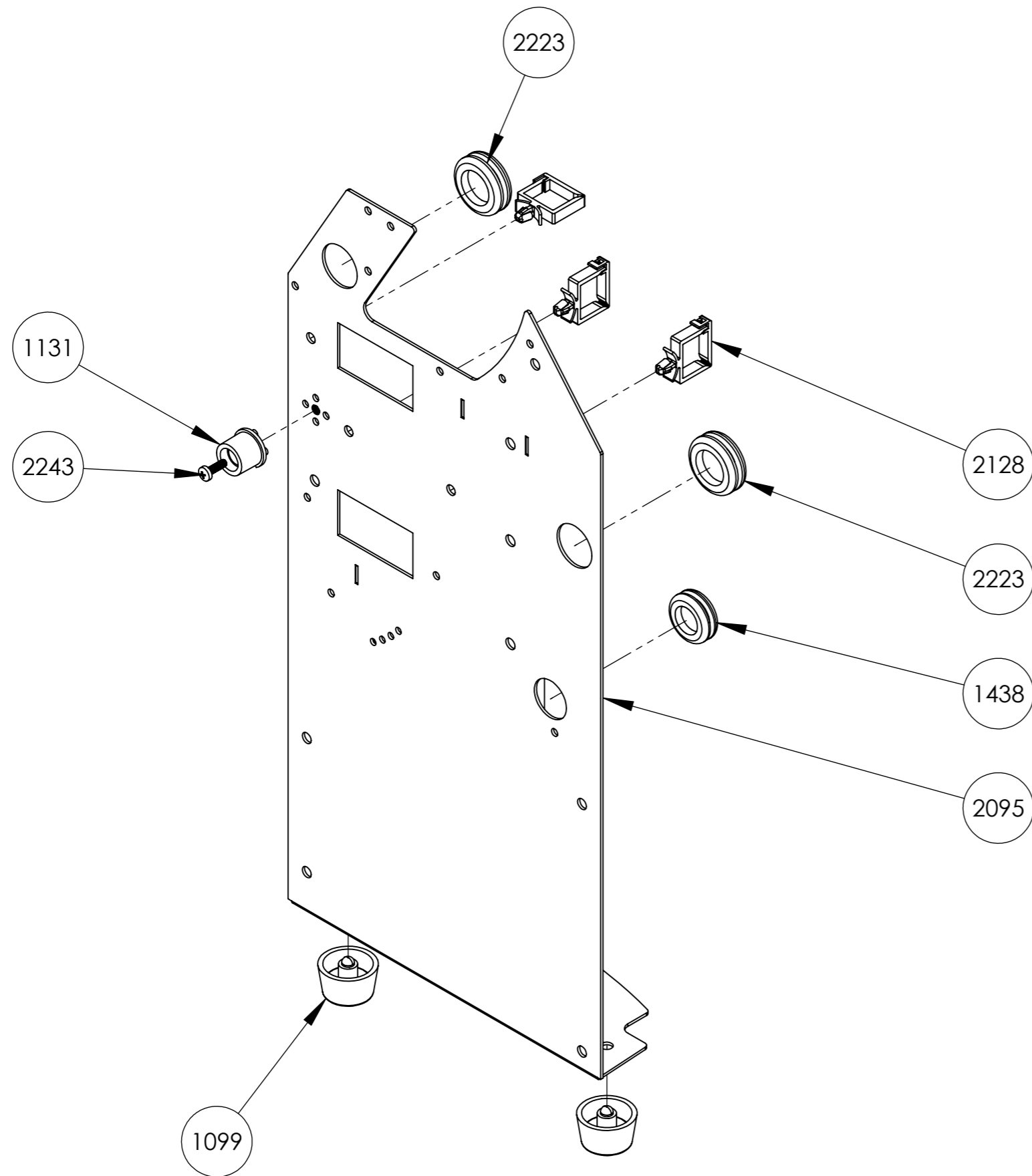
This document must not be copied without our written permission, and the contents thereof must not be imparted to a third party nor be used for any unauthorized purpose. Contravention will be prosecuted.



4	Screw MC6S 8.8 M6x8 fzb	2244
4	Lock Washer AZ6,4 fzb	2264
1	MRX M3x10 fzb	2243
2	Feet High	1099
1	Cable Grommet	1438
1	Holder axle attachment left	1133
1	Stepper Motor Paper	1910
1	Plate Side Right	2094
QTY	Part Name	Part Number

	Part Name <b>Plate Side Right Motor Module</b>			
	Part Number <b>2378</b>	Drawn by <b>Mattias</b>	Approved by	Format <b>A3</b>
	Date <b>2012-08-17</b>		Revision <b>+</b>	Scale <b>1:2</b>
				Sheet <b>1/1</b>

This document must not be copied without our written permission, and the contents thereof must not be imparted to a third party nor be used for any unauthorized purpose. Contravention will be prosecuted.

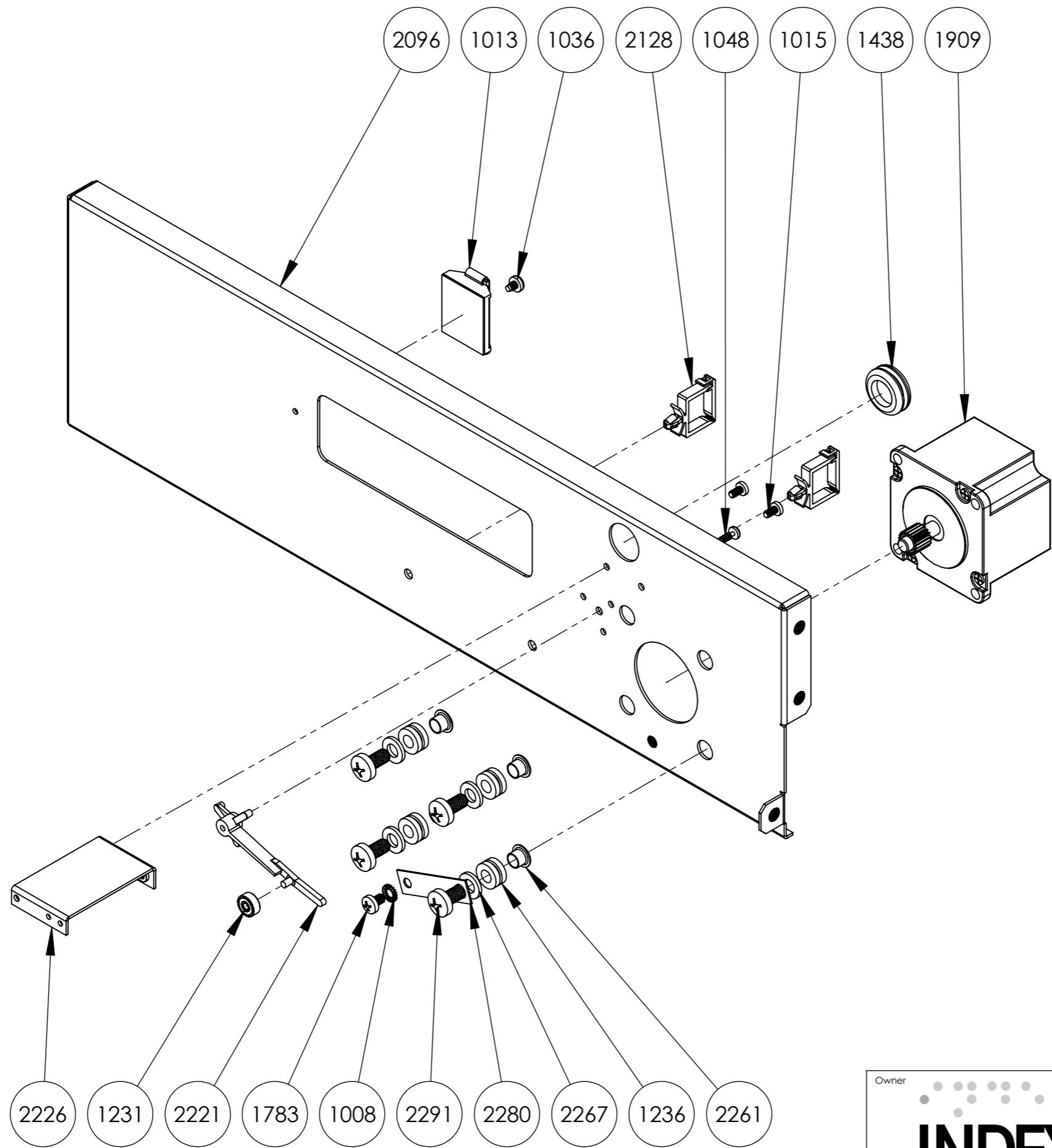


1	MRX M3x10 fzb	2243
2	Feet High	1099
1	Cable Grommet	1438
2	Cable Grommet	2223
3	Cable Holder	2128
1	Holder axle attachment right	1131
1	Plate Side Left	2095
QTY	Part Name	Part Number



Owner		Part Name	
<b>INDEX BRAILLE</b>		<b>Plate Side Left Module</b>	
		Part Number	2377
Drawn by	Approved by	Format	Scale
Mattias		A3	1:2
Date		Revision	Sheet
2012-08-17		+	1/1

This document must not be copied without our written permission, and the contents thereof must not be imparted to a third party nor be used for any unauthorized purpose. Contravention will be prosecuted.

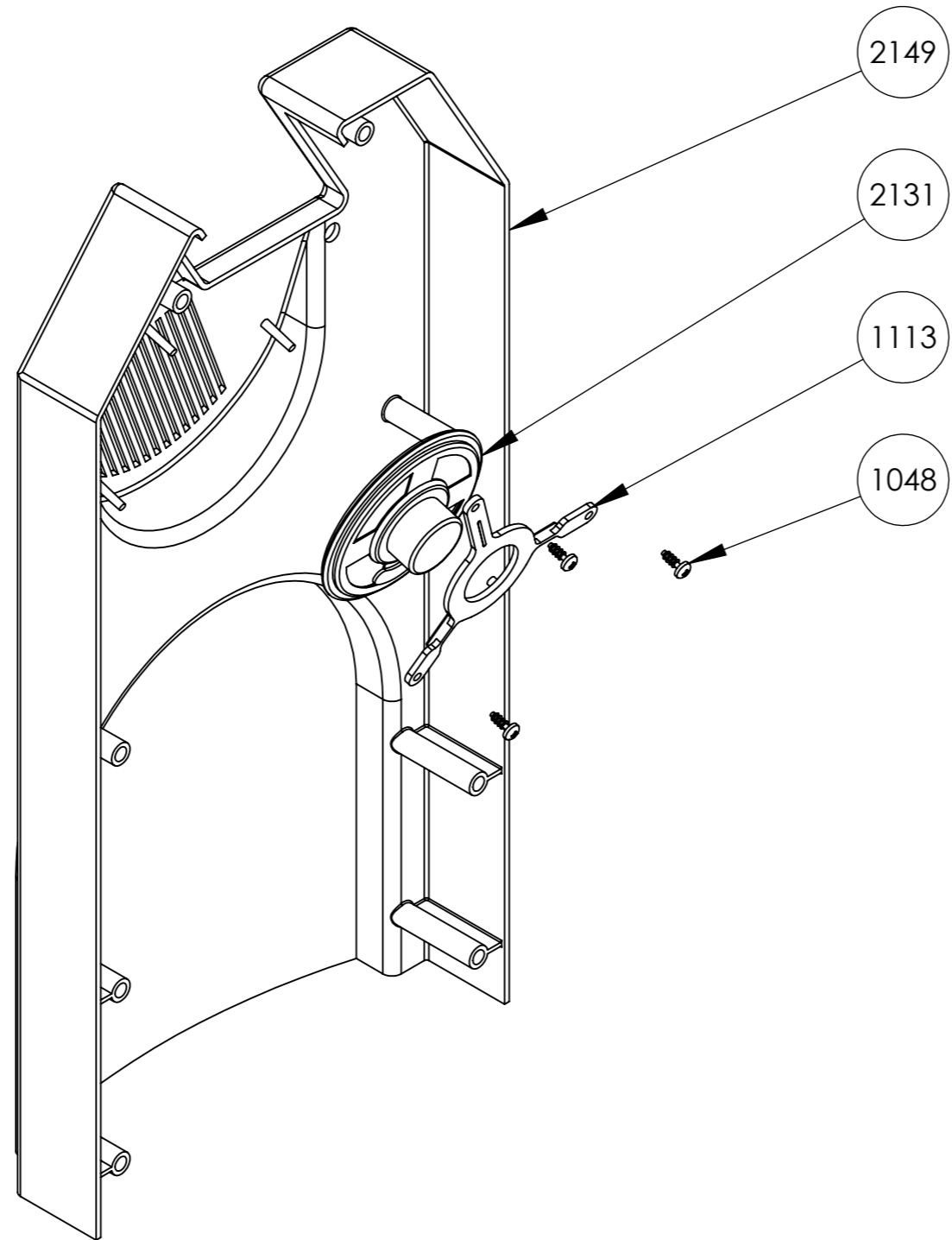


1	Screw PT-WN 1442 ST3,0x8 fzb	1048
1	Screw MRX M4x6 fzb	1783
4	Screw MRX M6x12 fzb	2291
4	Washer BRB HB200 6,4x12x1,6 fzb	2267
1	Screw RXK ST3,5x4,5-fzb	1036
1	Lock Washer AZ4,3 fzb	1008
2	Screw MRX M3x6 fzb black	1015
1	BallBearing 623-ZZ	1231
1	Holder Cable	1013
1	Cable Grommet	1438
1	Spring Stretcher	2221
2	Cable Holder	2128
1	Grounding Plate Motor	2280
4	Flange Pipe 7x0,45x5 P H10	2261
4	Rubber damper	1236
1	Stepper Motor Head	1909
1	Bracket Paper Sensor	2226
1	Plate Center	2096
QTY	Part Name	Part Number



Owner		Part Name	
<b>INDEX BRAILLE</b>		<b>Plate Center Module</b>	
		Part Number	Drawn by <b>Mattias</b>
<b>2379</b>		Approved by _____	Format <b>A3</b>
Date 2012-08-17		Revision _+	Scale <b>1:2</b>
			Sheet <b>1/1</b>

This document must not be copied without our written permission, and the contents thereof must not be imparted to a third party nor be used for any unauthorized purpose. Contravention will be prosecuted.

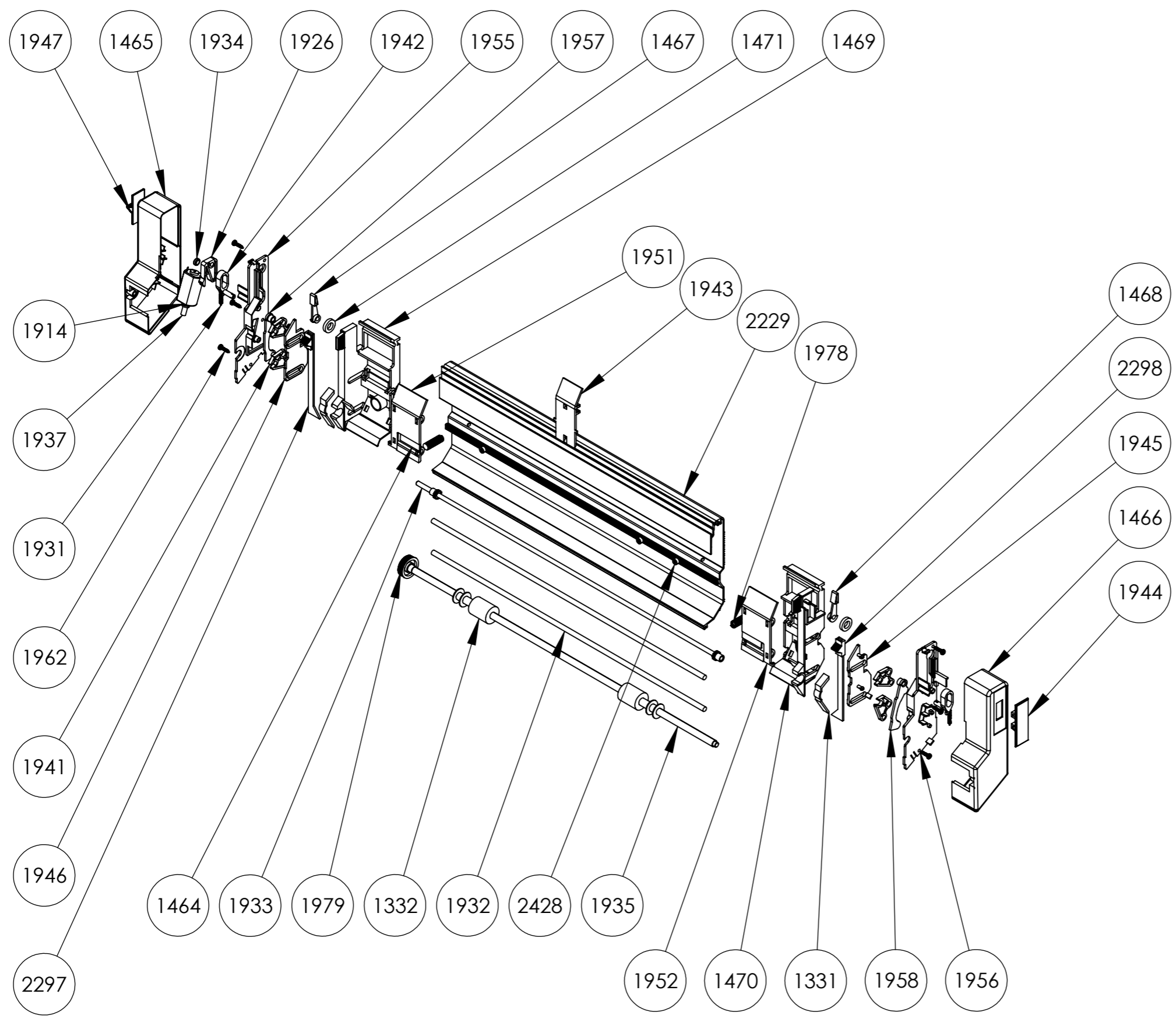


3	Screw PT-WN 1442 ST3,0x8 fzb	1048
1	Speaker Holder	1113
1	Speaker with Cable	2131
1	Casing right speaker	2149
QTY	Part Name	Part Number



Owner		Part Name	
		Casing Right Speaker Module	
Part Number	Drawn by	Approved by	Format
2376	Mattias		A3
Date		Revision	Scale
2012-08-17		+	1:2
			Sheet
			1/1

This document must not be copied without our written permission, and the contents thereof must not be imparted to a third party nor be used for any unauthorized purpose. Contravention will be prosecuted.



1	Sheet Feeder Gear Worm	1937
1	Module Motor DC Sheet Feeder	1914
1	Gear Worm + Roller Clutch	1979
1	Sheet Feeder Shaft + GearWheel	1933
1	Sheetfeeder Cover Left	1465
2	Sheetfeeder Spring Tension	1931
1	Sheetfeeder Bushing Distance	1934
1	Sheetfeeder Catch 1	1926
1	Sheetfeeder Twin Tool Left	1957
1	Sheetfeeder Twin Tool Right	1958
2	Sheetfeeder Rod Tie	1942
1	Profile SheetFeeder	2229
3	Screw MC6S 8.8 M4x6H fzb	2428
1	Sheetfeeder Cover Side	1944
2	Axle Support Sheetfeeder	1331
6	Screw Torx DG30x13	1962
1	Sheetfeeder Side Right	1956
1	Sheet Feeder Cover Plate Left	1946
1	Sheet Feeder Cover Plate Right	1945
4	Swivel Lever	1941
1	Sheetfeeder Side Left	1955
1	Sheetfeeder Cover Right	1466
1	Sheetfeeder Paper Chute Left	1469
1	Sheetfeeder Paper Chute Right	1470
1	Sheetfeeder Guide	1947
2	Sheetfeeder Spring Pressure	1978
1	Sheetfeeder Sheet Card Right	2298
1	Sheetfeeder Lock Arm	1468
1	Sheetfeeder Sheet Card Left	2297
1	Sheetfeeder Lock Arm	1467
2	Sheetfeeder Rubber Locker Ring	1471
2	Sheetfeeder Shaft	1932
2	Sheetfeeder Cork	1464
1	Sheetfeeder Shaft	1935
1	Sheetfeeder Support	1943
2	Pickup Rollers Sheet	1332
1	Sheetfeeder Setting Plate R	1951
1	Sheetfeeder Setting Plate L	1952
QTY	Part Name	Part Number



Owner		Part Name	
SheetFeeder		2237	
Part Number	2237	Drawn by	Mattias
Date	2012-08-17	Approved by	
Format	A3	Scale	1:10
Revision		Sheet	1/1