

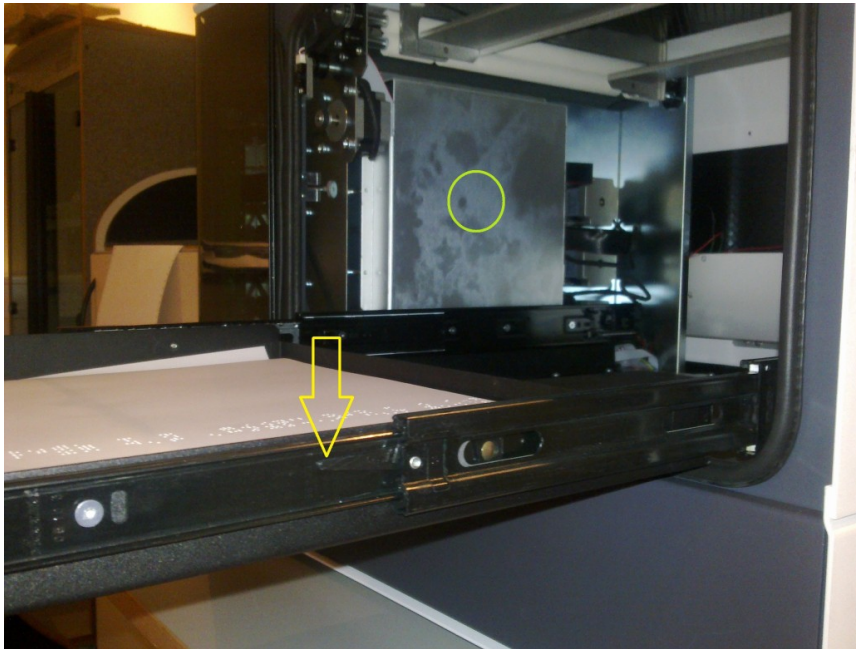
Replacing the driver PCB

Removing the PCB

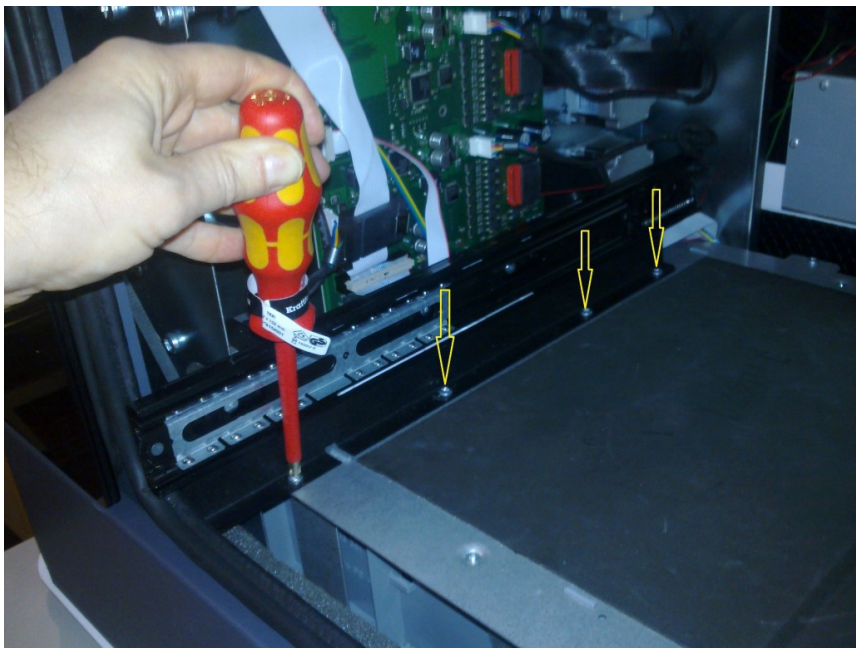
1. Make sure that the Braille Box is disconnected from mains and all attached cables on the backside are removed.
2. Open the braille tray fully.
3. Press the lever on the left side down as shown by the yellow arrow (picture 1) and lift the lever on the right side.
4. Pull the braille tray out.
5. Remove the metal cover (marked with a green circle in the picture 1) by pulling it straight out perpendicular to the embossing heads.
6. Remove the 4 screws as shown in picture 2.
7. To remove the power supply cable press the sides of the connector (picture 3) and pull straight out (you may have to wiggle the connector).
8. Remove all the other connectors.
9. Remove the PCB by gently pulling it out at each PCB stand off. Put your thumb nail on top of the stand offs and pull with your index finger (picture 5). Watch your nail polish!
10. Put the PCB in an anti static bag. (use the one received with the new PCB).

Mounting the new PCB

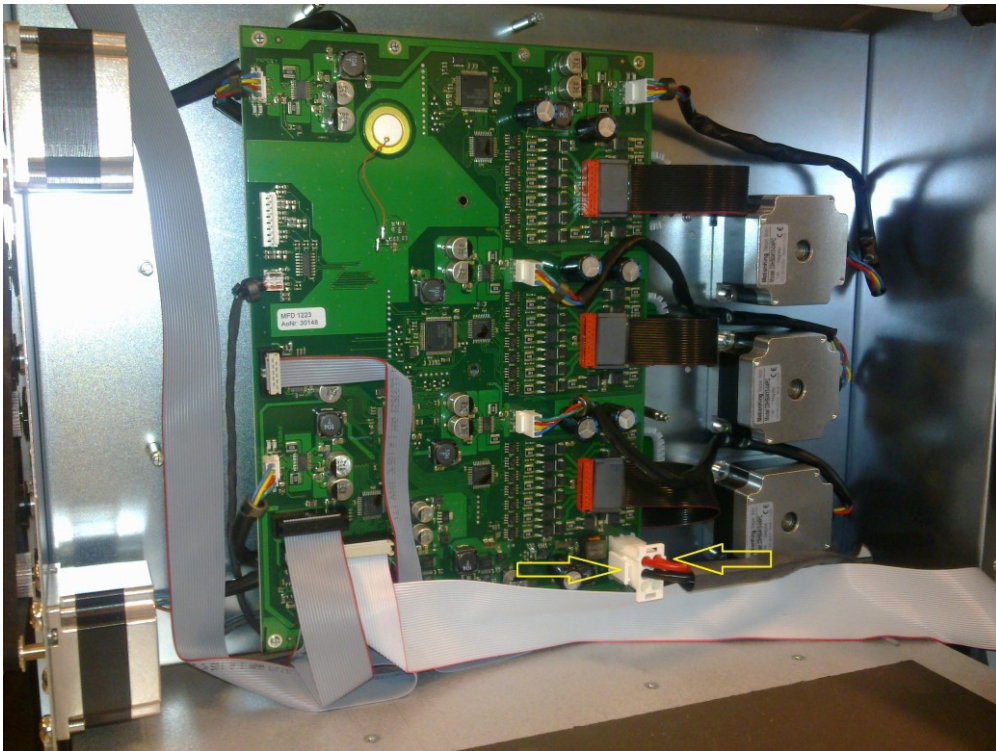
1. Mount the new PCB by pushing it in place at each PCB stand off.
2. Mount all connectors as shown in picture 3. Remember the two hidden connectors as shown in picture 4 (pointed out by blue arrows). The connector shown by the yellow arrow in picture 4 has no connection.
3. Mount the metal cover over the PCB.
4. Remount the braille tray guide (picture 2)
5. Attach the braille tray (no need to press or pull the levers in picture 1).
6. Start the Braille Box.
7. It sometimes beeps for about 5 to 8 minutes when starting up with a new PCB. During this time the main CPU is programming the driver PCB. It should only happen first time after replacing the driver PCB.
8. After it has started press HELP+ON to perform a hammer test.



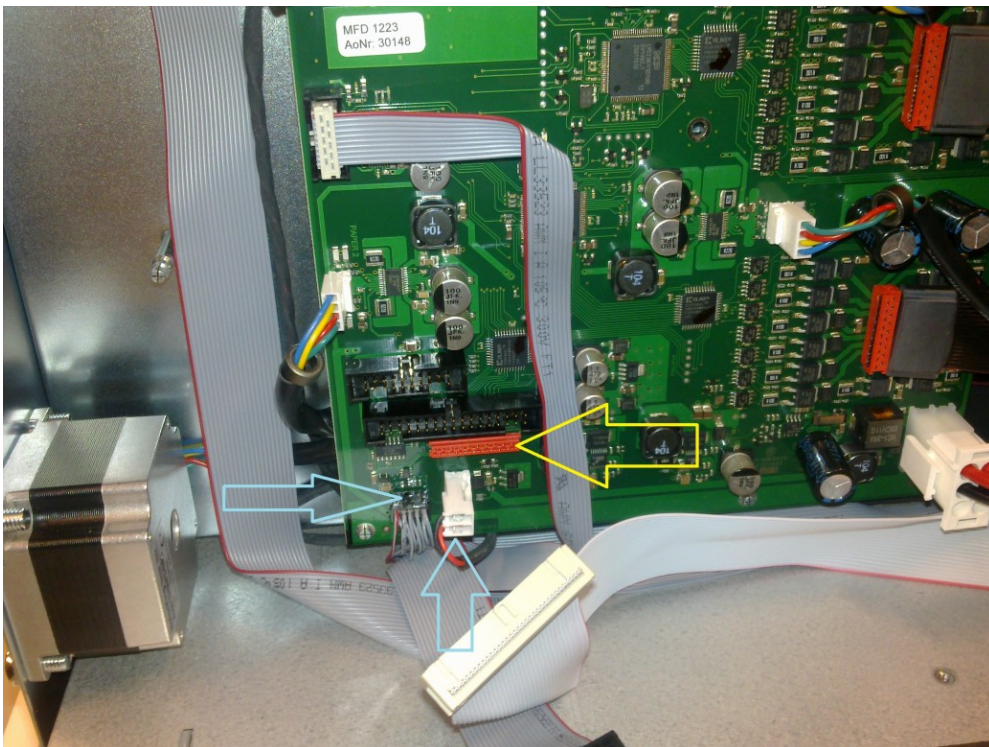
Picture 1



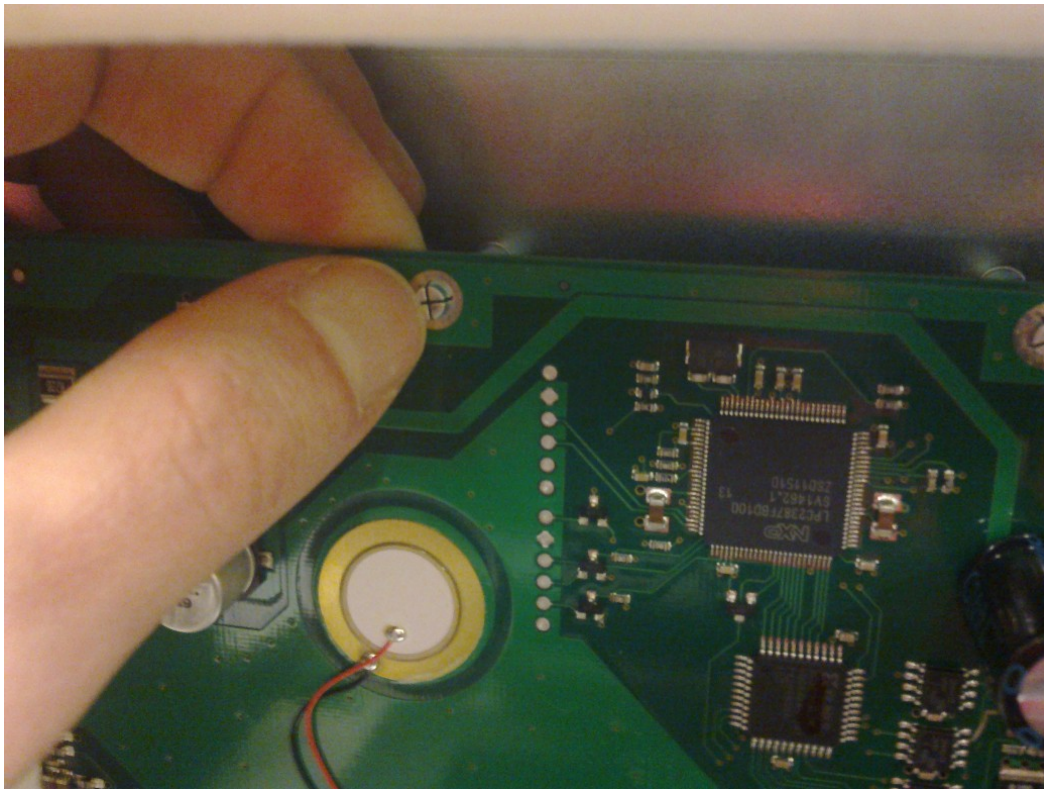
Picture 2



Picture 3



Picture 4



Picture 5